

SHEET NOTES

- ① PROVIDE FIRE ALARM, INTERCOMMUNICATIONS, TELEPHONE, CATV AND COMPUTER NETWORKING CABLES IN EXISTING UNDERGROUND DUCT BANK AND PULL BOX SYSTEM.
- ② PROVIDE ELECTRICAL SUBFEED CABLES IN EXISTING UNDERGROUND DUCT BANK AND PULL BOX SYSTEM.
- ③ PROVIDE UNDERGROUND DUCT BANK.
- ④ PROVIDE 2"-0" X 3'-0" UNDERGROUND DUCT BANK PULL BOX, ASSOCIATED PRODUCTS QUICK SET #1100-RPM1000 SET PULL BOX ON 12"-1/2" CRUSHED ROCK, SET PULL BOX FLUSH WITH EXISTING GRADE, PROVIDE WEEP HOLE AT PULL BOX SUMP.
- ⑤ PROVIDE FIRE ALARM SYSTEM UNDERGROUND UTILITY BOX, ASSOCIATED PRODUCTS QUICK SET #E30-D.
- ⑥ PROVIDE ELECTRICAL SUBFEED CONNECTION AT EXISTING MAIN ELECTRICAL SWITCHBOARD, FOR DETAILS SEE SHEET E4.
- ⑦ FOR CONTINUATION OF UNDERGROUND DUCT BANK SEE SHEET E3.

| REVISIONS | BY |
|-----------|----|
| | |
| | |
| | |

ELECTRICAL FEEDER SCHEDULE

| | |
|---|---|
| ① | 2-3" C (EXISTING) 4 #400-MCM 1 #4 GRD. THWN CU. EACH. |
| ② | 2-3" C (NEW) 4 #400-MCM 1 #4 GRD. THWN CU. EACH. |
| ③ | 2-2" C FIRE ALARM |
| ④ | 1-4" PVC COMPUTER NETWORKING |
| ⑤ | 1-4" PVC INTERCOM, TELEPHONE, CATV |
| ⑥ | 1-4" PVC SPARE |

SYMBOLS

- ⊕ DUPLEX RECEPTACLE OUTLET, FLUSH WALL MOUNTED AT +18" ABOVE FINISHED FLOOR U.O.N.
- ▽² DATA OUTLET, FLUSH WALL MOUNTED AT +18" ABOVE FINISHED FLOOR U.O.N. SUBSCRIPT INDICATES NUMBER OF OUTLETS.
- ▽ TELEPHONE TERMINAL OUTLET, FLUSH WALL MOUNTED AT +18" ABOVE FINISHED FLOOR U.O.N.
- CONDUIT AND WIRE RUN UNDERFLOOR OR UNDERGROUND.
- CONDUIT AND WIRE RUN CONCEALED.
- ~ FLEXIBLE CONDUIT.
- "A"-2 HOMERUN TO PANELBOARD "A", "2" INDICATES CIRCUIT NUMBER.
- /// SLASH MARKS INDICATE NUMBER OF #12 AWG WIRES, NO SLASH MARKS INDICATES 2 #12 AWG WIRES, U.O.N. CHEVRON MARKS INDICATES NUMBER OF #10 AWG WIRES, U.O.N.
- CONDUIT STUB-OUT WITH CAP
- ⊙ JUNCTION BOX WITH COVER
- ⊞ JUNCTION BOX PROVIDED BY OTHERS
- ⊙ JUNCTION BOX WITH TAMPERPROOF SCREWS
- ⊙ TELEVISION OUTLET, WALL MOUNTED AT +18" ABOVE FINISHED FLOOR U.O.N., 4-11/16" SQUARE BY 2-1/8" DEEP BOX WITH TWO GANG RING.
- ⊞ COMMUNICATIONS PULL BOX
- ⊞ FIRE ALARM PULL BOX
- ⊙ INTERCOMMUNICATIONS SPEAKER
- ⊞ EXTERIOR INTERCOMMUNICATIONS SPEAKER

JEFFERSON M.S. RELOCATABLES
 823 ACACIA AVENUE
 OCEANSIDE, CA 92054
 OCEANSIDE UNIFIED S.D.

Standard Electronics
 9340 Stevens Road
 San Jose, CA 95071
 (415) 396-9950

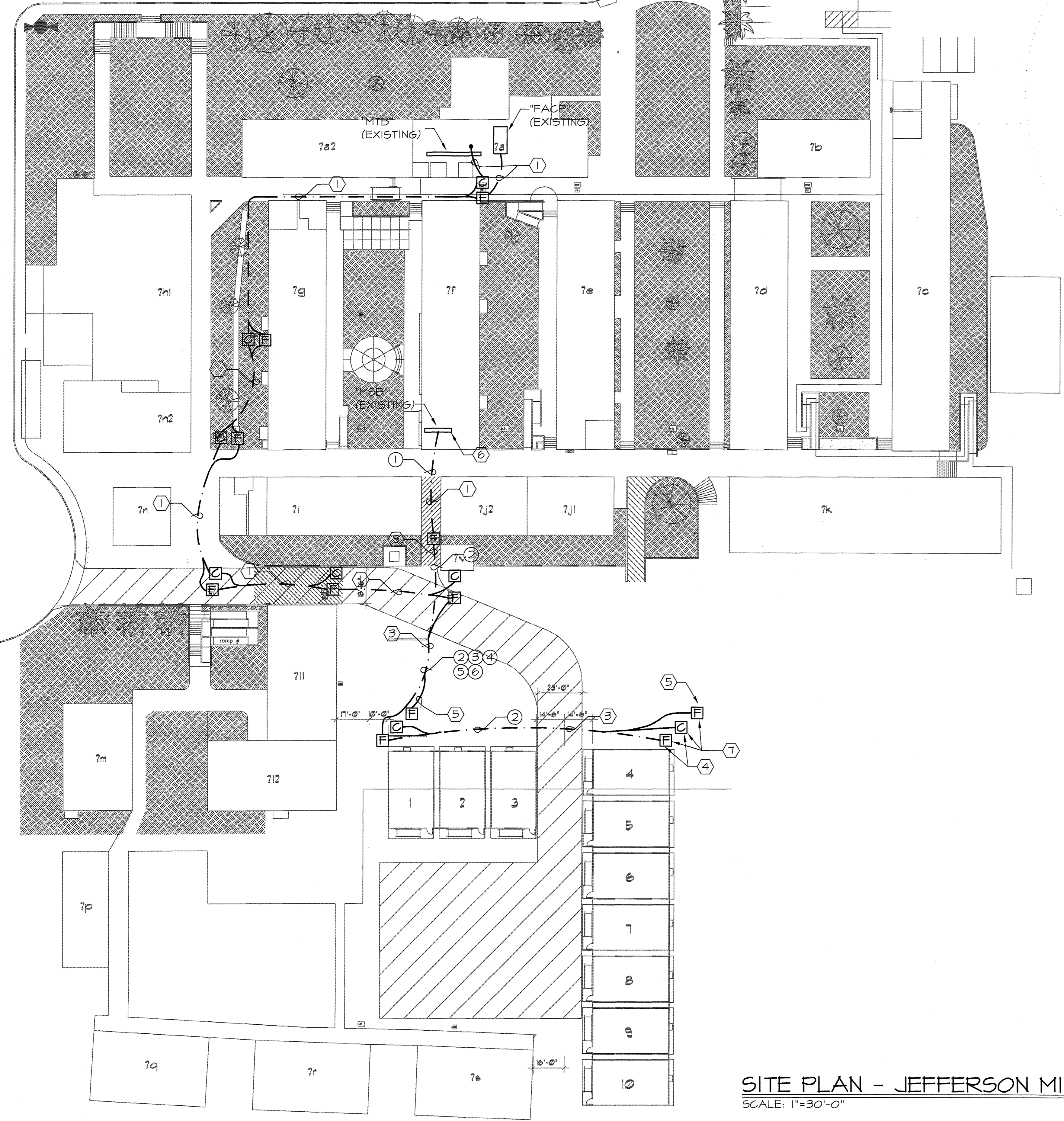
SITE PLAN
 INTERCOM,
 DATA AND TV
 SYSTEM

| | |
|---------|-------------|
| DATE: | 10-30-00 |
| SCALE: | 1" = 30'-0" |
| DRAWN: | V.B.K.E. |
| DWG NO. | SE00-1015 |
| JOB ID: | 846-00-00 |

| | |
|-----------|----------|
| SHEET NO. | 1 |
| OF | 3 SHEETS |

acacia avenue

poplar road



SITE PLAN - JEFFERSON MIDDLE SCHOOL
 SCALE: 1"=30'-0"

AS-BUILT
 1-22-01 JL

SHEET NOTES

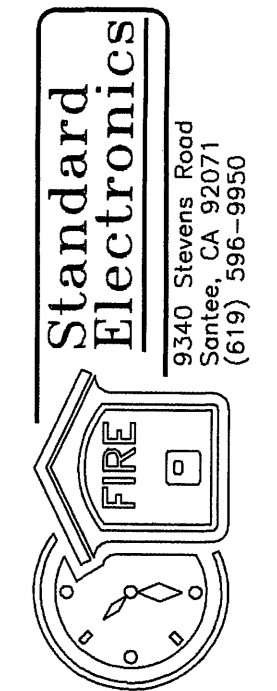
- ① PROVIDE ELECTRICAL UNDERGROUND DUCT BANK (TYPICAL).
- ② PROVIDE GROUND ROD WITH GROUND CONNECTION TO RELOCATABLE CLASSROOM PANEL AND CLASSROOM STEEL FRAME. FOR DETAILS SEE, MODTEC DRAWINGS SHEET E1.01 (TYPICAL).
- ③ PROVIDE ELECTRICAL SPLICE/PULL BOX. FOR DETAILS SEE, SHEET E4 (TYPICAL).
- ④ PROVIDE 12"x12"x4" NEMA 3R FIRE ALARM SPLICE/PULL BOX AT RELOCATABLE CLASSROOM FIRE ALARM POINT OF CONNECTION (TYPICAL).
- ⑤ PROVIDE 12"x18"x6" NEMA 3R COMMUNICATIONS SPLICE PULL BOX MOUNTED AT +118", PENETRATE RELOCATABLE CLASSROOM EXTERIOR WALL. EXTEND COMMUNICATIONS CONDUITS INTO CLASSROOM ABOVE SUSPENDED CEILING. SEAL PENETRATIONS (TYPICAL).
- ⑥ PROVIDE RELOCATABLE CLASSROOM DISCONNECT COMPLETE WITH ELECTRICAL CONNECTION TO RELOCATABLE CLASSROOM ELECTRICAL PANEL. FOR DETAIL, SEE SHEET E4 (TYPICAL).
- ⑦ PROVIDE WALL MOUNTED TELEPHONE HANDSET (TYPICAL).
- ⑧ PROVIDE SINGLE COMPUTER NETWORKING OUTLET (TYPICAL).
- ⑨ PROVIDE DUAL COMPUTER NETWORKING OUTLET (TYPICAL).
- ⑩ PROVIDE CABLE TELEVISION OUTLET (TYPICAL).
- ⑪ PROVIDE INTERCOMMUNICATIONS SPEAKER (TYPICAL).
- ⑫ PROVIDE EXTERIOR INTERCOMMUNICATIONS SPEAKER (TYPICAL).
- ⑬ PROVIDE TWO (2) 20 AMP 1 POLE CIRCUIT BREAKER TO MATCH EXISTING AT RELOCATABLE CLASSROOM ELECTRICAL PANEL, CIRCUITS 14,16.
- ⑭ PROVIDE ELECTRICAL CONNECTION TO FIRE ALARM PANEL.
- ⑮ PROVIDE DOUBLE DUPLEX RECEPTACLE MOUNTED INSIDE "IDF" ENCLOSURE.
- ⑯ PROVIDE COMPUTER NETWORKING INTERMEDIATE DISTRIBUTION FRAME, 19" WALL MOUNTED CABINET RACK TECHNOLOGIES #WC2429, WITH THREE 19" CANTILEVER OR APPROVED EQUAL BY ASANTE SHELF RACK TECHNOLOGIES #9023. MOUNT DIRECTLY BELOW SUSPENDED CEILING.
- ⑰ PROVIDE TERMINATION AND DISTRIBUTION OF INTERCOMMUNICATIONS, TELEPHONE, CABLE TELEVISION AND COMPUTER NETWORKING SYSTEMS TO RELOCATABLE CLASSROOM COMPLEX.
- ⑱ PROVIDE EXTERIOR SECURITY LIGHT FIXTURE, LITHONIA #TWH-1005-120-E OR APPROVED EQUAL COMPLETE WITH LAMP AND "HOT" CONNECTION TO EXISTING RELOCATABLE CLASSROOM EXTERIOR LIGHTING CIRCUIT, MOUNT AT +120".
- ⑲ FOR CONTINUATION, SEE SHEET E2.

ELECTRICAL FEEDER SCHEDULE

| | |
|---|--|
| ① | 2-3" C, 4 #400 MCM #4 GRD. THWN CU. EACH |
| ② | 1-3" C, 4 #400 MCM #4 GRD. THWN CU. |
| ③ | 1-2" C, FIRE ALARM |
| ④ | 2-2" C, FIRE ALARM |
| ⑤ | 1-2" C, INTERCOMMUNICATIONS |
| ⑥ | 1-2" C, TELEPHONE |
| ⑦ | 1-2" C, CABLE TELEVISION |
| ⑧ | 1-2" C, COMPUTER NETWORKING |
| ⑨ | 1-2" C, SPARE |

| REVISIONS | BY |
|-----------|----|
| | |
| | |
| | |

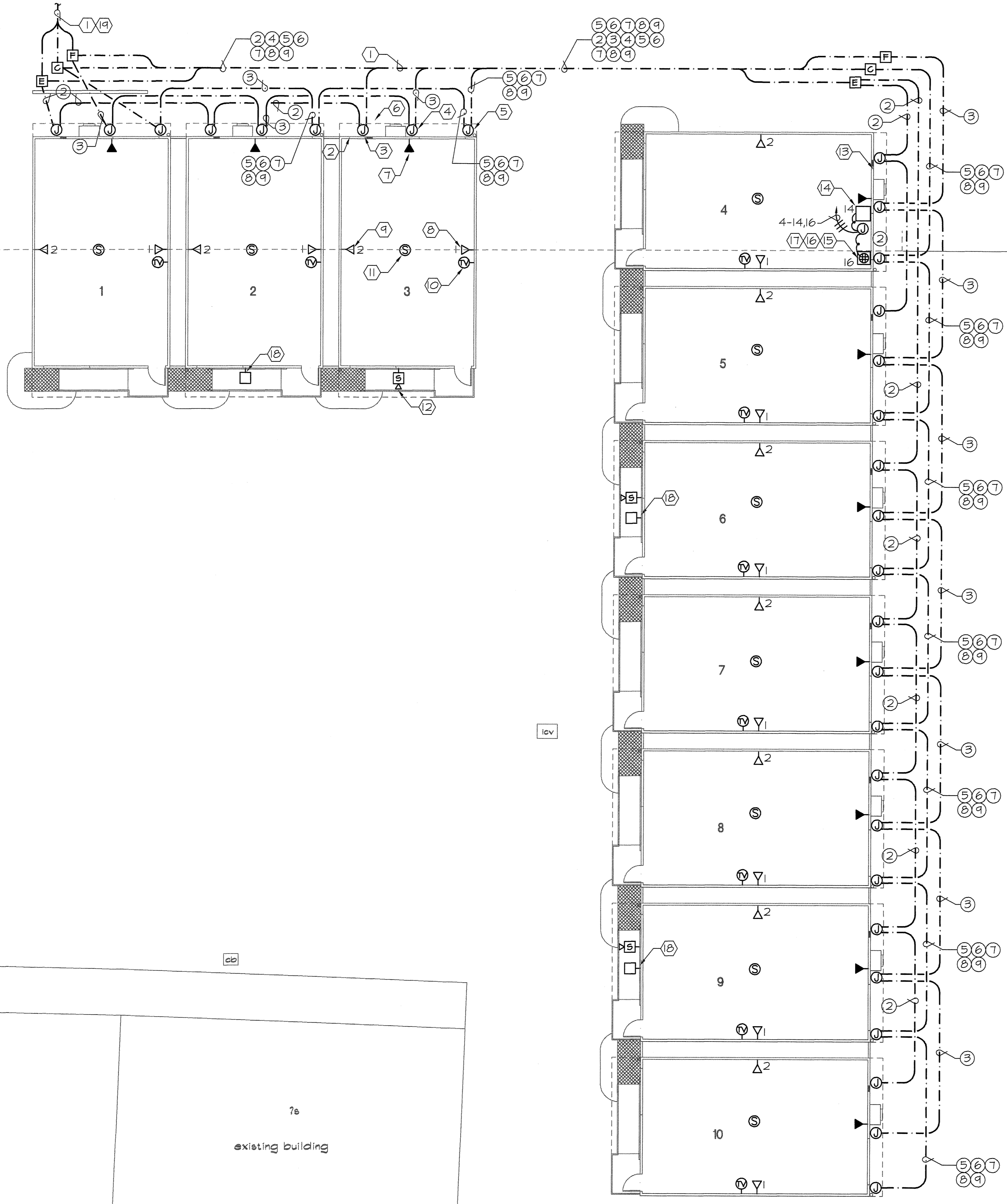
JEFFERSON M.S. RELOCATABLES
 823 ACACIA AVENUE
 OCEANSIDE CA 92054
 OCEANSIDE UNIFIED S.D.



RELOS
 INTERCOM,
 DATA AND TV
 SYSTEM

| | |
|---------|--------------|
| DATE: | 10-30-00 |
| SCALE: | 1/8" = 1'-0" |
| DRAWN: | V.B.K.E. |
| DWG NO. | SE00-1015 |
| JOB ID: | 846-00-00 |

SHEET NO. **2**
 OF **3** SHEETS

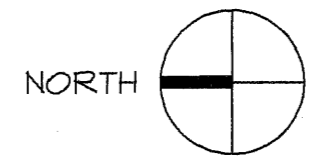


712

7r
 existing building

7b
 existing building

RELOCATABLE CLASSROOM POWER & SIGNAL PLAN
 SCALE: 1"=10'-0"

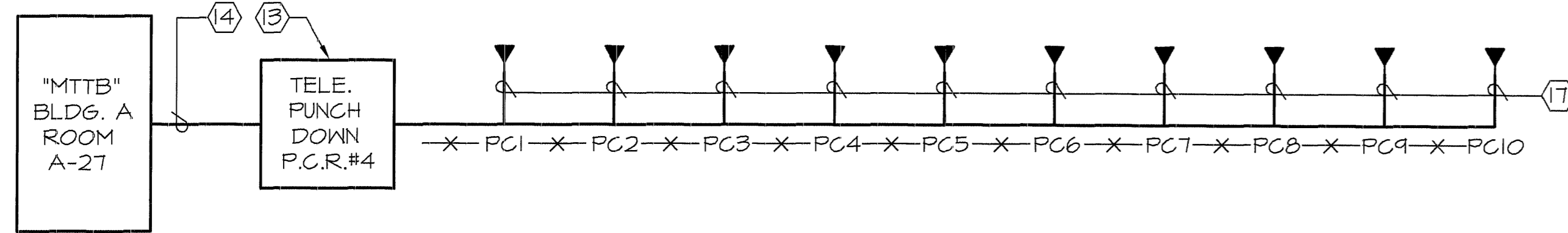


AS-BUILT
 1-22-01 JL

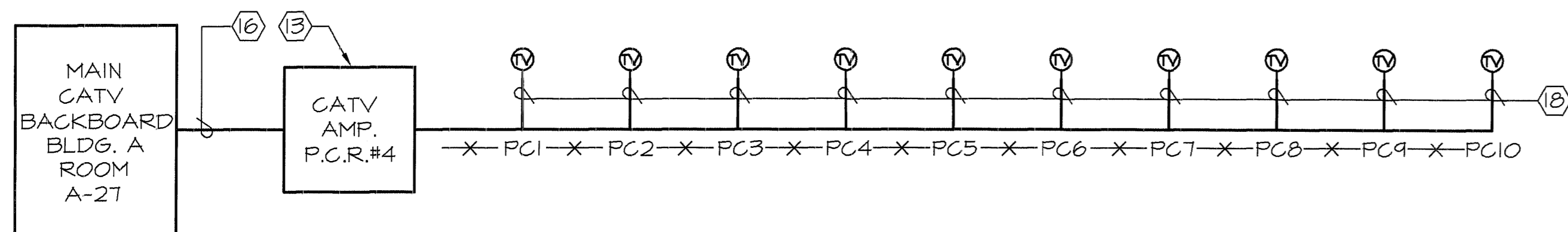
SHEET NOTES

- (13) PROVIDE COMMUNICATIONS AND COMPUTER NETWORKING ENCLOSURE. FOR DETAILS, SEE SHEET E3.
- (14) PROVIDE TWO (2) 25 PAIR, #19 AWG CABLE CESSEX "SEALPIC-F" OR APPROVED EQUAL. TERMINATE CABLE AND "MTB" AND "IDF".
- (15) PROVIDE 6 STRAND MULTIMODER FIBER CABLE LUCENT # 3DSX-006-HXM (10634648a) PLACED IN 1" INNER DUCT PLACED IN EXISTING AND NEW CONDUIT. TERMINATE CABLE AT "MDF" AND "IDF".
- (16) PROVIDE CABLE TELEVISION SITE DISTRIBUTION CABLE, COM SCOPE #P-375-500-JCASS. TERMINATE CABLE AT "MDF" AND "IDF".
- (17) PROVIDE CATEGORY THREE TELEPHONE CABLE, GENERAL CABLE #2133016, TERMINATE CABLE AT DEVICE AND "IDF".
- (18) PROVIDE CABLE TELEVISION CABLE, WEST PENN #841 RG6/U. TERMINATE CABLE AT DEVICE AND "IDF".
- (19) PROVIDE ONE (1) DATA NETWORKING BLUE CATEGORY FIVE CABLE, LUCENT #1061004BBLW100, TERMINATE CABLE AT DEVICE AND "IDF".
- (20) PROVIDE TWO (2) DATA NETWORKING BLUE CATEGORY FIVE CABLE, LUCENT #1061004BELW100, TERMINATE CABLE AT DEVICE AND "IDF".

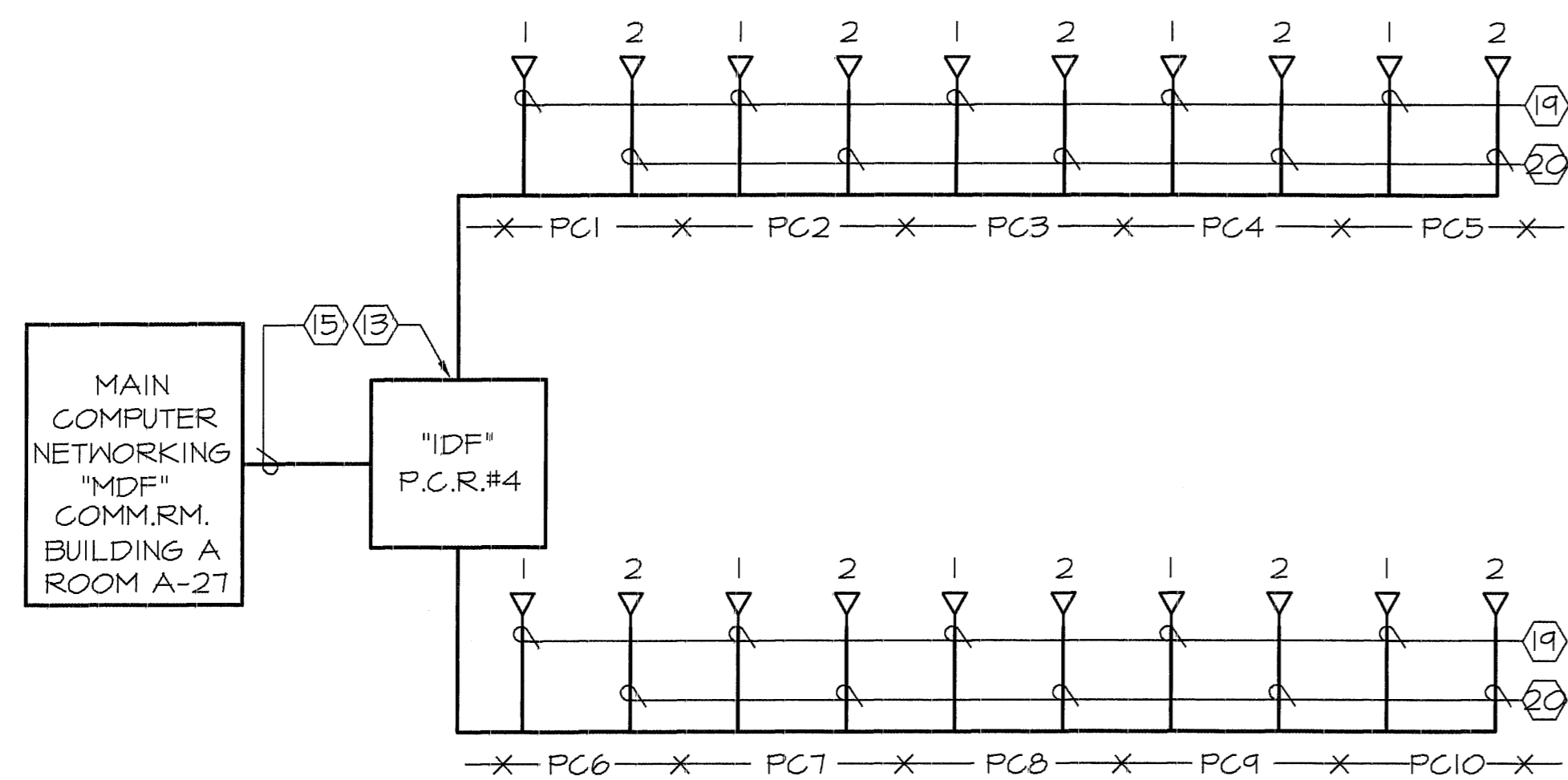
| REVISIONS | BY |
|-----------|----|
| | |
| | |
| | |
| | |



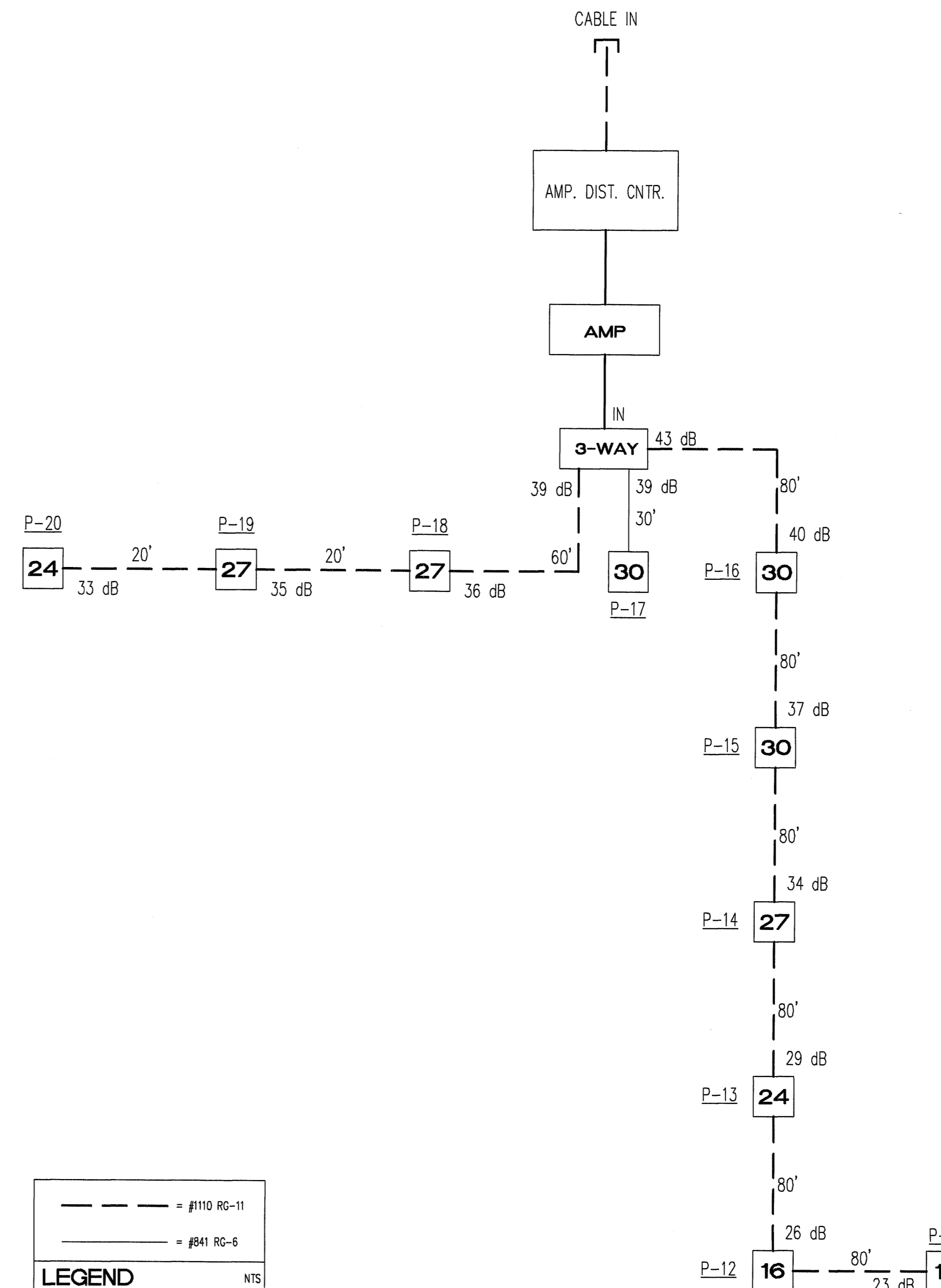
COMMUNICATIONS RISER DIAGRAM
NO SCALE



CABLE TELEVISION RISER DIAGRAM
NO SCALE



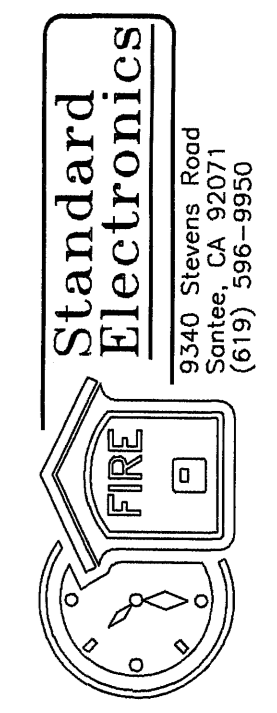
DATA NETWORKING RISER DIAGRAM
NO SCALE



--- = #1110 RG-11
 — = #841 RG-6
LEGEND NTS

AS-BUILT
 1-22-01 JL

JEFFERSON M.S. RELOCATABLES
 823 ACACIA AVENUE
 OCEANSIDE, CA 92054
 OCEANSIDE UNIFIED S.D.



RISER DIAGRAMS
INTERCOM, DATA AND TV SYSTEM

| | |
|---------|-----------|
| DATE: | 10-30-00 |
| SCALE: | NONE |
| DRAWN: | V.B.K.E. |
| DWG NO. | SE00-1015 |
| JOB ID: | 846-00-00 |

SHEET NO. **3**
 OF **3** SHEETS