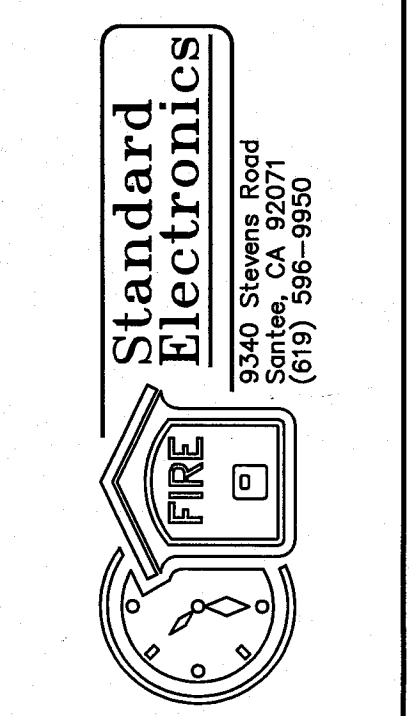


REVISIONS	BY
09-19-05 IN-HOUSE	EM

**JEFFERSON MIDDLE SCHOOL**  
**NEW CONSTRUCTION**  
**823 ACAIA STREET**  
**OCEANSIDE, CA 92054**



**SITE PLAN**  
**FIRE ALARM**  
**SYSTEM**

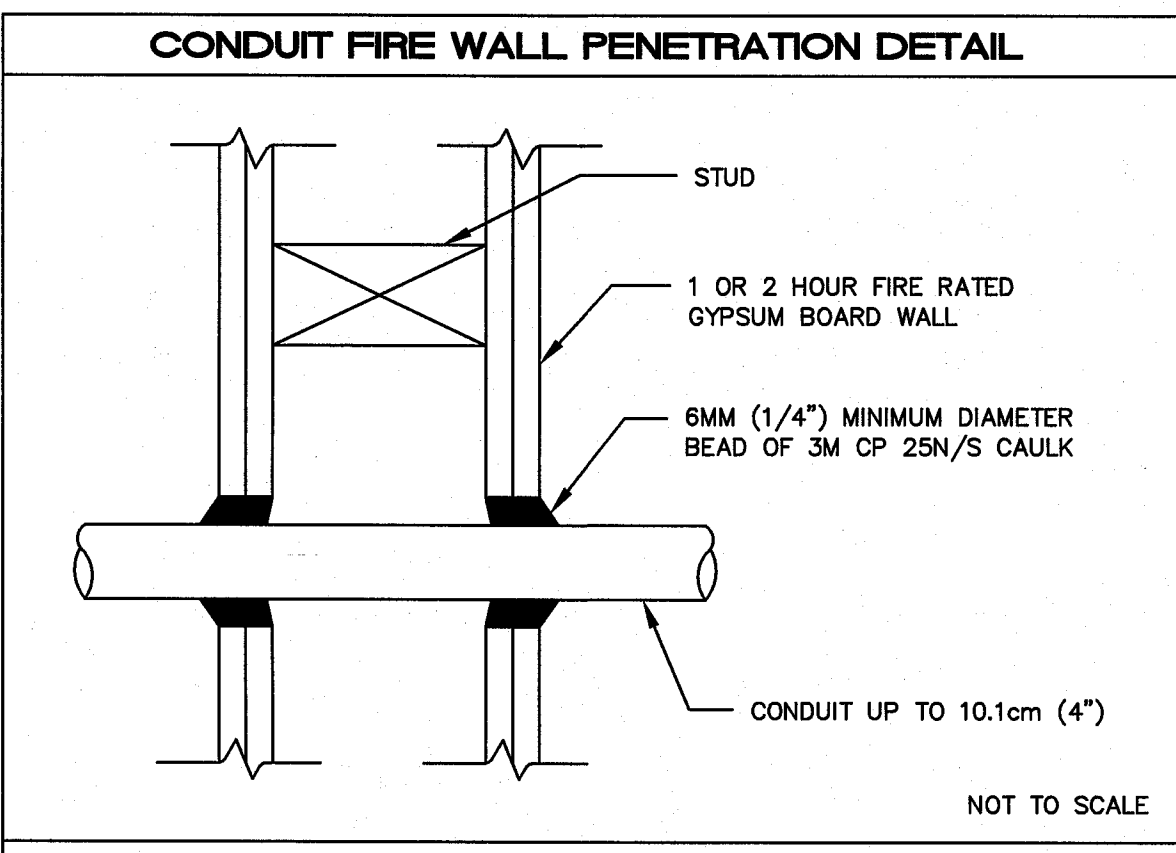
DATE:	6-29-05
SCALE:	AS NOTED
DRAWN:	D CASTELLANOS
CHECKED:	
DWG NO.:	SE05-0617
JOB ID:	704

FIRE ALARM SEQUENCE OF OPERATION MATRIX							
DEVICE	ACTION						
	MANUAL FIRE ALARM STATION AT FACP AND REMOTE ANNUN.	SOUND/AUDIBLE/ VISUAL THROUGH OUT BUILDING	ACTIVATE ELEVATOR SHUNT TRIP BREAKER	ACTIVATE ELEVATOR RECALL	TRANSMIT SIGNAL TO CENTRAL STATION SERVICE	SHUT DOWN UNDISCHARGED HVAC UNIT	SHUT DOWN ASSOCIATED SWIMMER/FAUCET
AREA SMOKE DETECTOR	YES	YES			YES		
AREA HEAT DETECTOR	YES	YES			YES		
MANUAL FIRE ALARM STATION	YES	YES			YES		
FIRE SPRINKLER WATER FLOW SWITCH	YES	YES			YES		
<b>SUPERVISORY SIGNALS</b>							
HVAC DUCT DETECTOR	YES				YES		
SMOKE/FIRE DAMPER DUCT DETECTOR	YES				YES		
TAMPER FAILURE	YES				YES		
POWER FAILURE	YES				YES		
<b>TROUBLE SIGNAL</b>							
GROUND FAULT	YES				YES		
OPEN CIRCUIT	YES				YES		
SNAC SHORT	YES				YES		
LOW BATTERY	YES				YES		

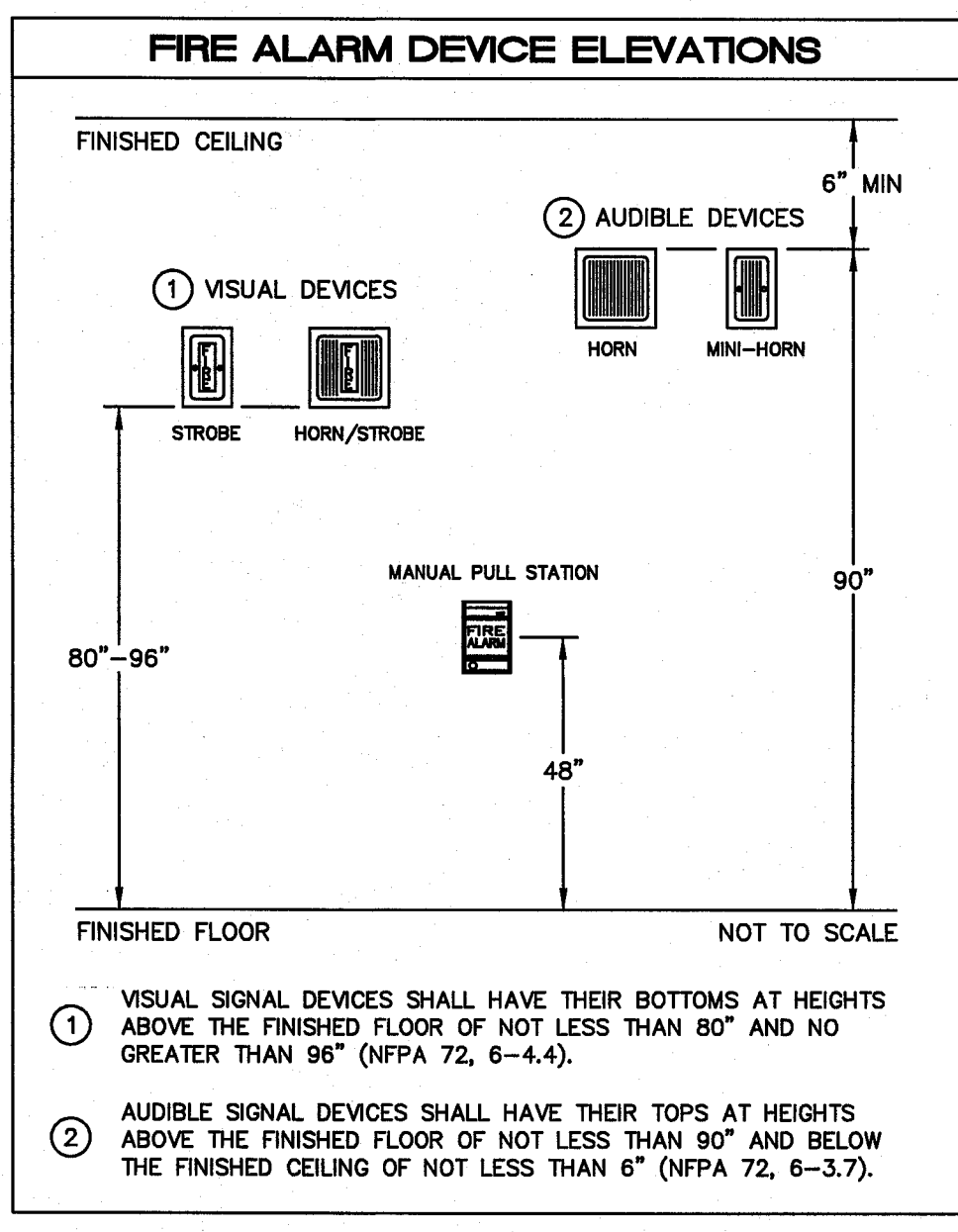
CONDUIT LEGEND	
----	EXTERIOR 2" CONDUIT UNLESS OTHERWISE NOTED
---	INTERIOR 3/4" CONDUIT UNLESS OTHERWISE NOTED
---	CONDUIT EXPOSED
-E-	EXISTING CONDUIT
--X--	EXISTING REMOVE

SHEET NOTES	
①	USE EXISTING WIRE AND CONDUIT
②	CONNECT TO EXISTING FIRE ALARM MINI-HORN. RELOCATE END OF LIN IN CLASSROOM 'T8' EXISTING FIRE ALARM MINI-HORN.
③	PROVIDE 1-1/2" WITH FIRE ALARM CABLES INDICATED.
④	PROVIDE 1-3/4" WITH FIRE ALARM CABLES INDICATED. ROUTE CONDUIT ABOVE ACCESSIBLE CEILING.
⑤	REMOVE EXISTING FIRE ALARM CABLES (INITIATING LOOP AND SNAC TRIP CIRCUITS) AND RECONNECT TO RELOCATED SNAC-T.

FIRE ALARM DEVICE LEGEND	
ANALOG FIRE ALARM CONTROL PANEL MODEL: FCI 7200A BSU/C C.S.F.M. 7165-0694:174	EXISTING
SNAC PANEL MODEL: SNAC-9 C.S.F.M. 7300-0694:230	SPECIAL BACKBOX SUPPLIED BY STANDARD ELECTRONICS 16"H x 12.25"W x 3"D
TERMINAL CABINET WITH 3/4" PLYWOOD BACKBOARD	PROVIDED BY OTHERS
ADDRESSABLE OUTPUT SUPERVISED CONTROL MODULE MODEL: AMM-25 C.S.F.M. 7300-0694:178	4 SQUARE DEEP BOX WITH NO RING
EXISTING MANUAL PULL STATION	
FLOW SWITCH (SUPPLIED AND INSTALLED BY OTHERS) WITH ADDRESSABLE MONITOR MODULE MODEL: AMM-2 C.S.F.M. 7300-0694:178	4 SQ DEEP BOX ADJACENT TO F.S.
TAMPER SWITCH (SUPPLIED AND INSTALLED BY OTHERS) WITH ADDRESSABLE MONITOR MODULE MODEL: AMM-2 C.S.F.M. 7300-0694:178	4 SQ DEEP BOX ADJACENT TO T.S.
ANALOG SMOKE DETECTOR MODEL: ASD-PL7 B210LP C.S.F.M. 7272-0694:254 (SMOKE) C.S.F.M. 7300-1209:128 (BASE)	4 SQUARE DEEP BOX WITH 3-D RING
135° ANALOG HEAT DETECTOR MODEL: ATH-L2 B210LP C.S.F.M. 7270-0694:256 (HEAT) C.S.F.M. 7300-1209:128 (BASE)	4 SQUARE DEEP BOX WITH 3-D RING
HORN/STROBE 080° MODEL: AS-24MCW-FR C.S.F.M. 7125-0785:131	4 SQUARE DEEP BOX WITH TWO GANG RING
CEILING HORN/STROBE MODEL: AS-24MCW-FW C.S.F.M. 7125-0785:131	4 SQUARE DEEP BOX WITH TWO GANG RING
WEATHER RESISTANT HORN MODEL: AH-24WP-R C.S.F.M. 7125-0785:131	WBB-R WEATHER PROOF BACKBOX
STROBE 080° MODEL: RSS-24MCW-FR C.S.F.M. 7125-0785:141	4 SQUARE DEEP BOX WITH TWO GANG RING
BELL MODEL: MB-06-24-R C.S.F.M. 7135-0785:113	4 SQUARE DEEP BOX WITH NO RING
E	EXISTING HORN/STROBE
M	EXISTING MINI HORN
FB	FIRE PULL BOX PROVIDED BY OTHERS
J	JUNCTION BOX PROVIDED BY OTHERS
⊙	JUNCTION BOX PROVIDED BY OTHERS
○	CONDUIT RISER
E	EXISTING DEVICE TO REMAIN



- NOTES:
- REFERENCE - WL1001
  - THE CAULK IS TO BE FORCED INTO THE ANNULAR SPACE TO THE MAXIMUM EXTENT POSSIBLE, FLUSH WITH THE EXTERIOR OF THE PENETRATION SURFACE.
  - FINISH CAULKING WITH A 6mm (1/4") MINIMUM BEAD OF 3M CP 25N/S CAULK APPLIED TO THE PERIMETER OF THE CONDUIT AT ITS EGRESS FROM THE WALL.
  - THE MAXIMUM ANNULAR SPACE IS NOT TO EXCEED 4mm (3/16").
  - INSTALL 3M FIRESTOP ON BOTH SIDES OF THE WALL.
  - THESE RECOMMENDATIONS ARE BASED ON THE PRODUCT PERFORMANCE PER ASTM E-914 (UL 1475) FIRE TEST AND UL THROUGH PENETRATION FIRESTOP SYSTEM #WL1001 RATED UP TO 2 HOURS.



WIRE LEGEND	
⊕ 1 #990 1 PAIR 16 AWG 1 RED / 1 BLK	INTERIOR SLC
⊕ 2 #12 AWG THHN/THWN-2 1 PNK / 1 PRP	HORNS AND STROBES
⊕ 1 #AQ225 1 PAIR 16 AWG 1 RED / 1 BLK	EXTERIOR SLC
⊕ 24 VDC	FOR BELL POWER

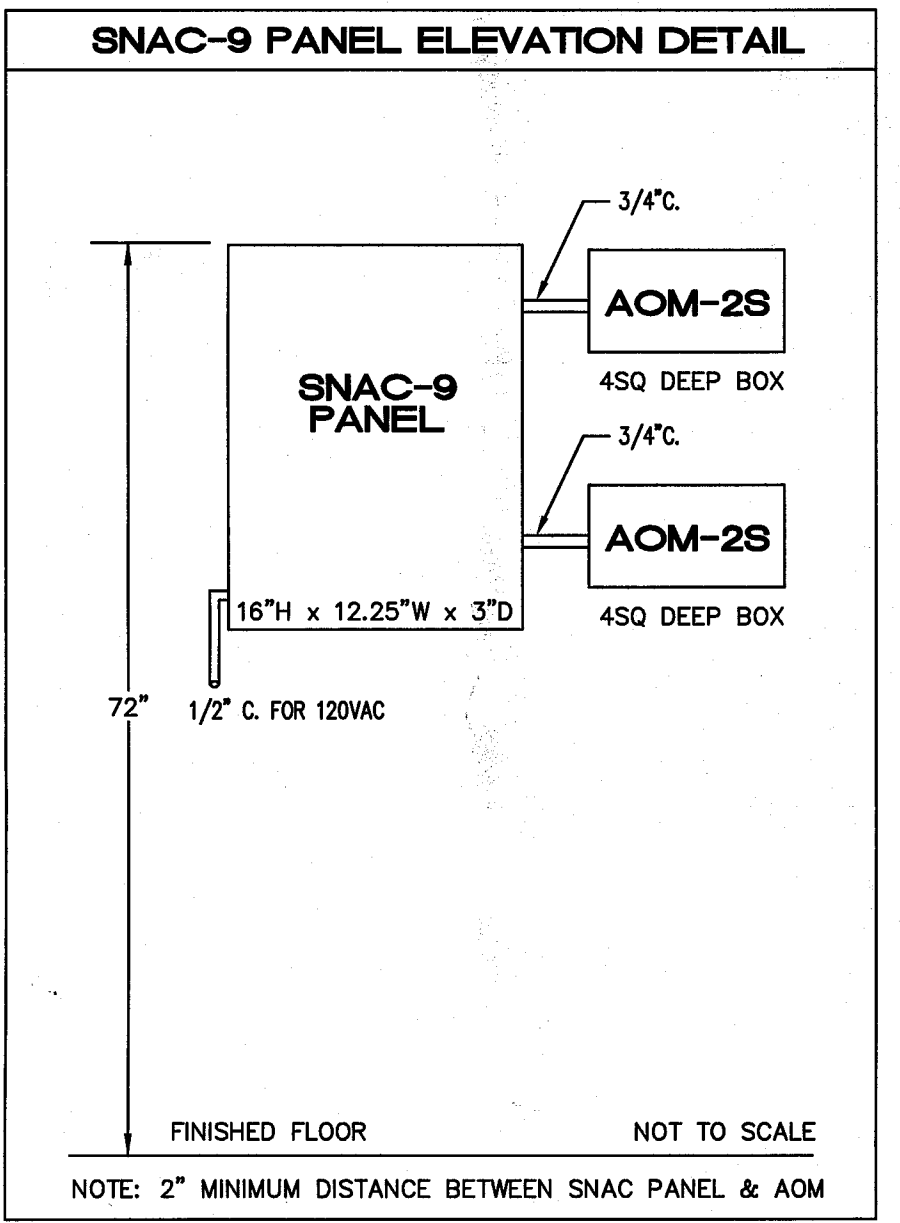
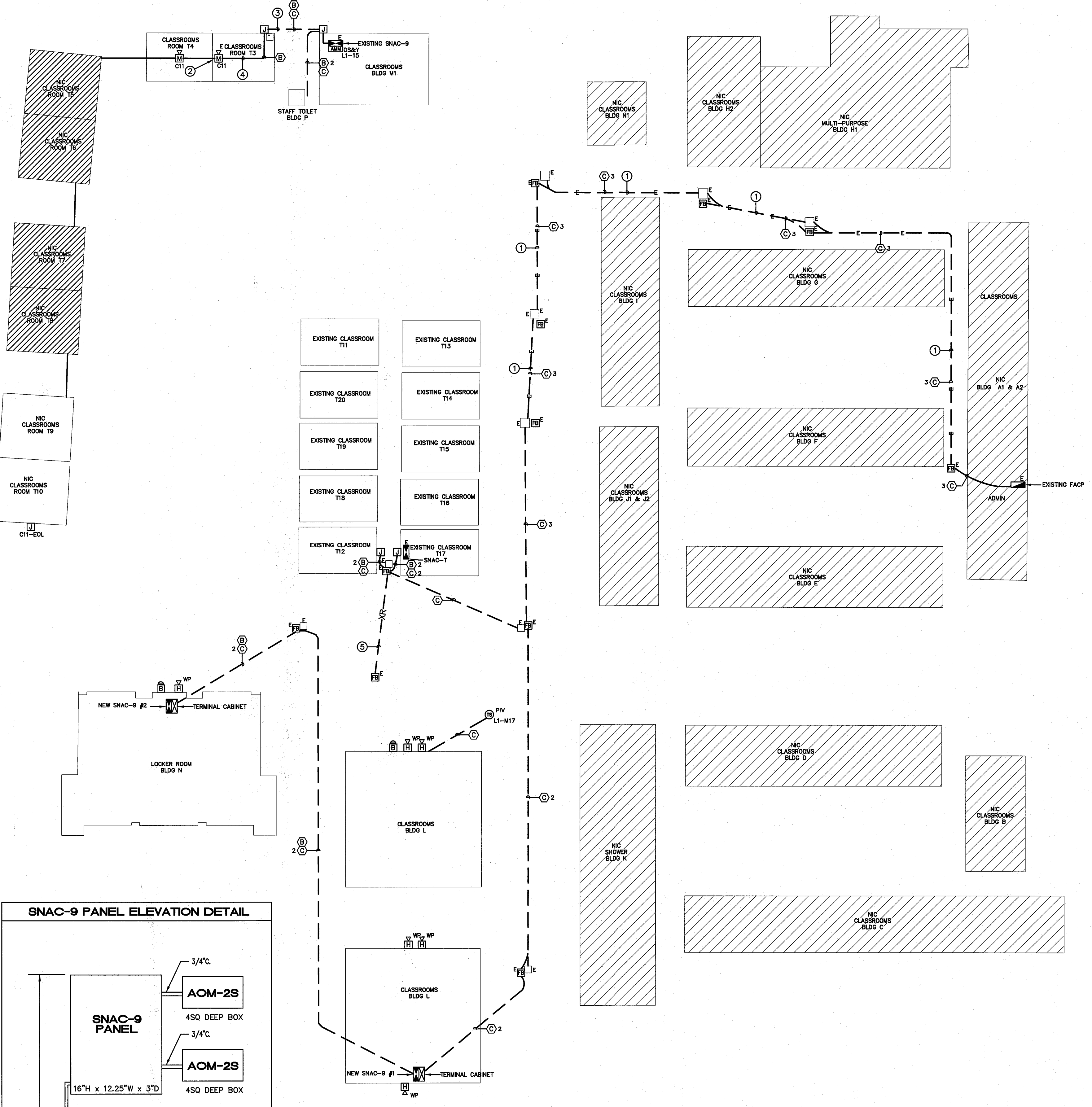
3/4" CONDUIT UNLESS OTHERWISE NOTED

DEVICE COUNT					
DEVICE	BLDG L FL1	BLDG L FL2	BLDG N	BLDG P	TOTAL
SNAC PANEL	1	0	1	0	2
SMOKE DETECTOR	20	23	3	0	46
HEAT DETECTOR	17	9	27	1	54
FLOW SWITCH	1	0	0	0	1
TAMPER SWITCH	2	0	2	0	4
CEILING HORN/STROBE	4	4	0	0	8
HORN/STROBE	1	2	4	1	8
STROBE	7	4	8	0	19
EXTERIOR HORN	3	2	4	0	9
BELL	1	0	1	0	2

**SITE PLAN**  
SCALE: 1" = 30'-0"

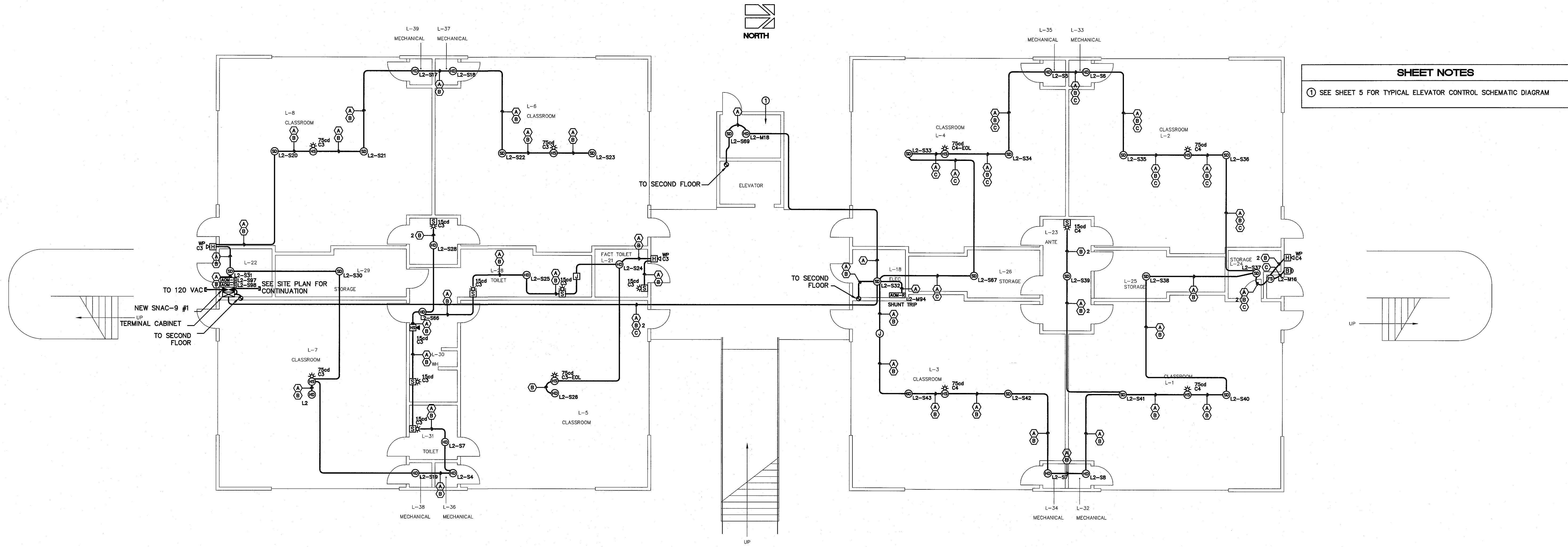
**SCOPE OF WORK**

- THIS IS A AUTOMATICALLY ACTIVATED FIRE ALARM SYSTEM.
- FURNISH AND INSTALL A COMPLETE 24 VDC, CLOSED CIRCUIT, MICROPROCESSOR BASED, ELECTRICALLY SUPERVISED, ZONE ANNUNCIATED FIRE ALARM SYSTEM AS SPECIFIED HERE ON THESE PLANS. THE SYSTEM SHALL INCLUDE BUT NOT BE LIMITED TO ALL CONTROL PANELS, POWER SUPPLIES, SIGNAL INITIATING DEVICES, AUDIBLE AND VISUAL ALARM DEVICES, CONDUIT, WIRE, FITTINGS, AND ACCESSORIES REQUIRED TO PROVIDE A COMPLETE OPERATING SYSTEM. THE SYSTEM SHALL BE WIRED AS A (CLASS B) SYSTEM FOR ALL CIRCUITS.

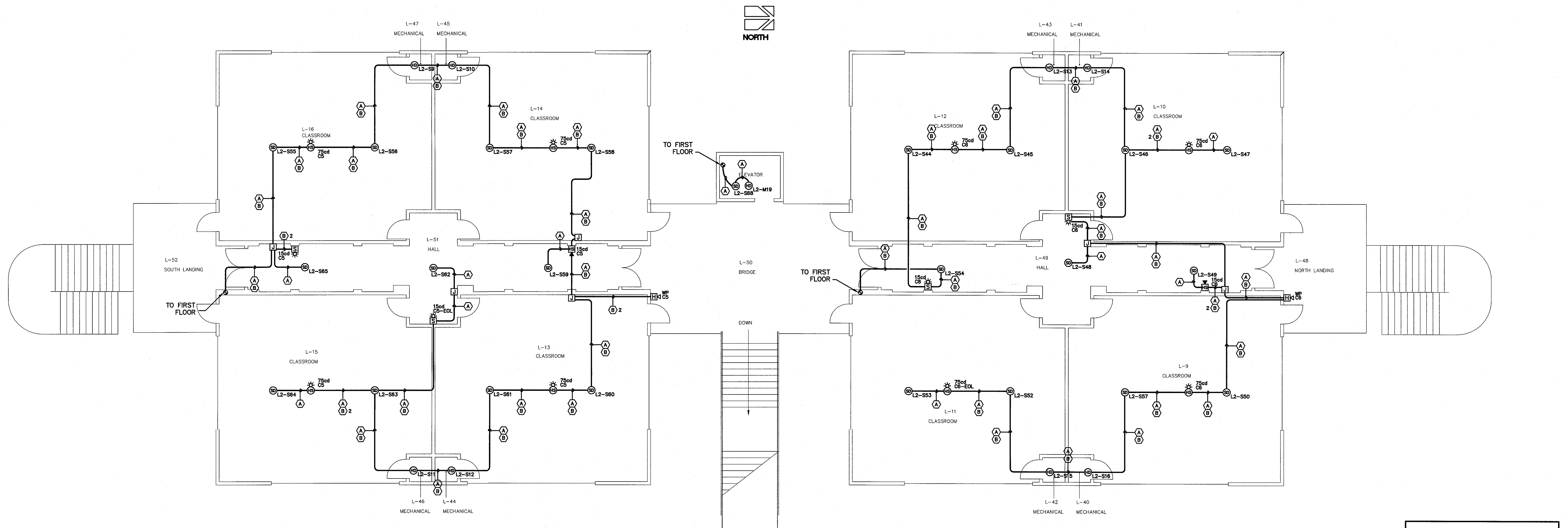


**AS-BUILT**  
11-28-06 DC

BUILDING L - CLASSROOMS - FIRST FLOOR



BUILDING L - CLASSROOMS - SECOND FLOOR



**AS-BUILT**  
 11-28-06 DC

JEFFERSON M.S.

REVISIONS	BY
09-19-05 IN-HOUSE	EM

**JEFFERSON MIDDLE SCHOOL**  
 NEW CONSTRUCTION  
 823 ACAIA STREET  
 OCEANSIDE, CA 92054

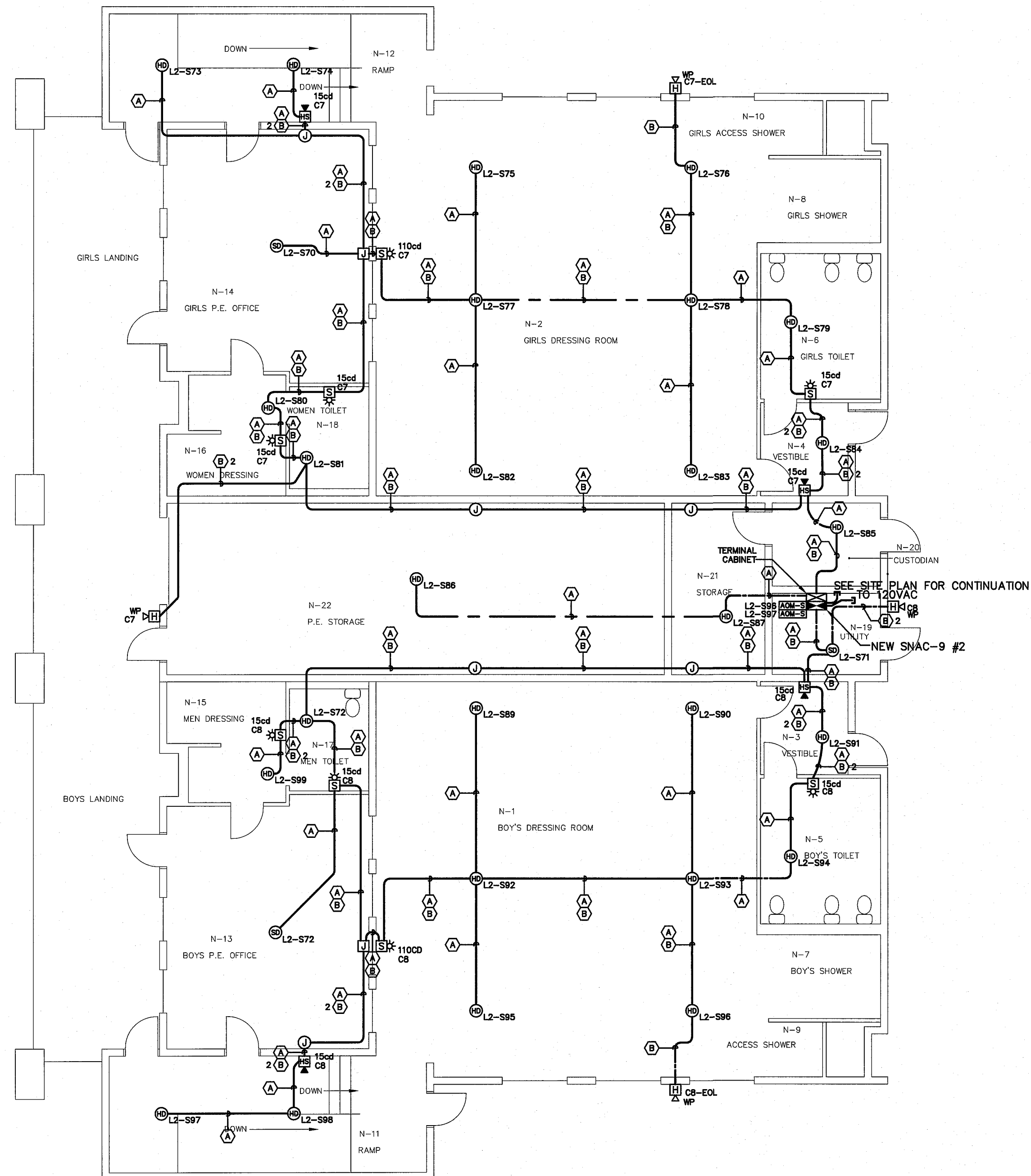
**Standard Electronics**  
 9340 Stevens Road  
 San Jose, CA 95071  
 (415) 586-9950

**FLOOR PLAN LAYOUT - FIRE ALARM SYSTEM**

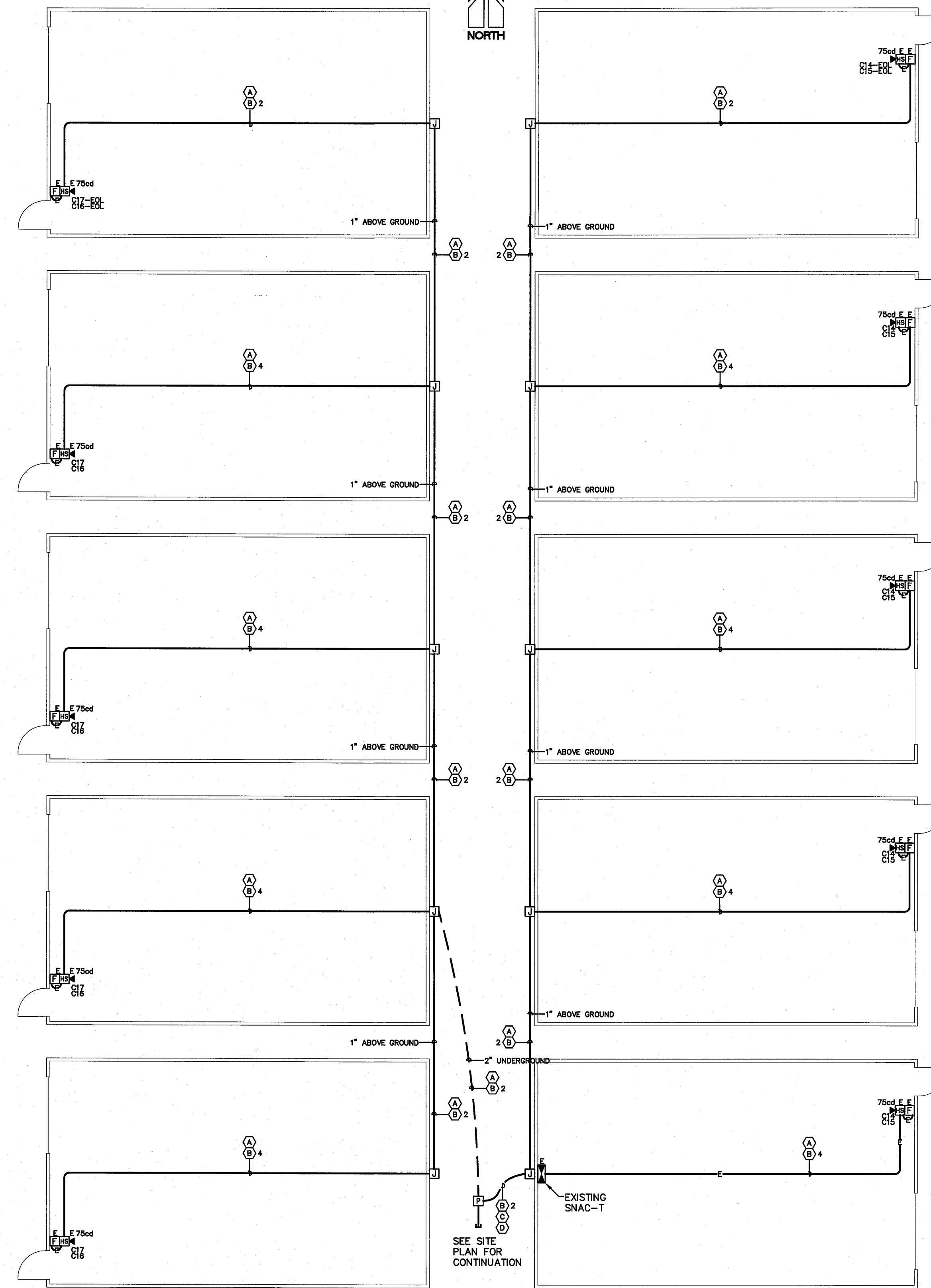
DATE:	6-29-05
SCALE:	1/8" = 1'-0"
DRAWN:	D. CASTELLANOS
CHECKED:	
DWG NO.	SE05-0617
JOB ID:	704

SHEET NO. **2**  
 OF **6** SHEETS

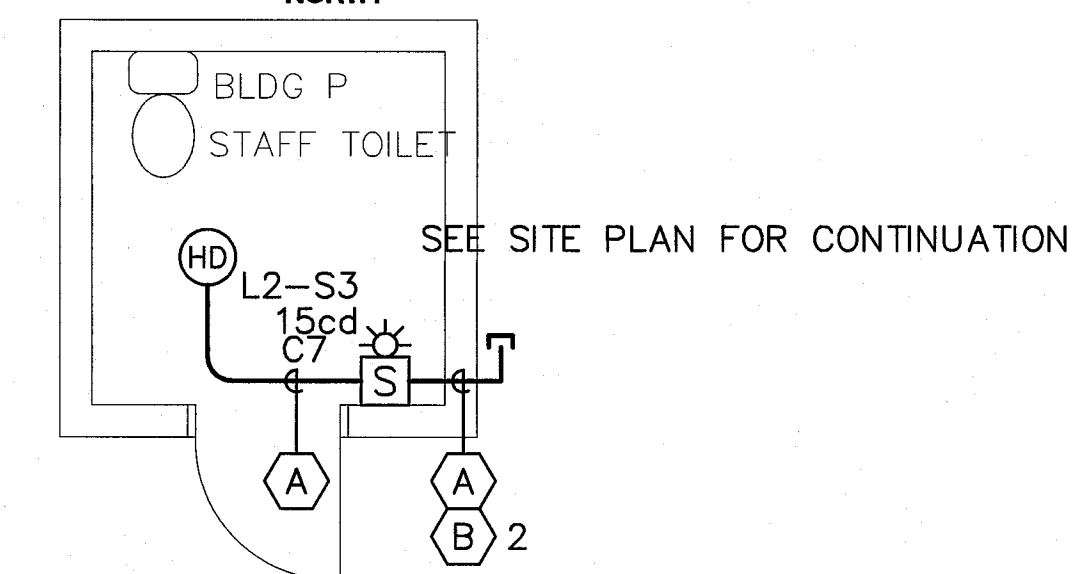
BUILDING N - LOCKER ROOM



BUILDINGS T11 - T20 - PORTABLE BUILDINGS



BUILDING P - STAFF TOILET



**AS-BUILT**  
11-28-06 DC

JEFFERSON M.S.

REVISIONS	BY
09-19-05 IN-HOUSE	EM

**JEFFERSON MIDDLE SCHOOL**  
NEW CONSTRUCTION  
823 ACAIA STREET  
OCEANSIDE, CA 92054

**Standard Electronics**  
9340 Stevens Road  
San Jose, CA 92071  
(415) 586-9950



**FLOOR PLAN LAYOUT - FIRE ALARM SYSTEM**

DATE: 6-29-05  
SCALE: 1/8"=1'-0"  
DRAWN: D. CASTELLANOS  
CHECKED:  
DWG NO. SE05-0617  
JOB ID: 704

SHEET NO. **3**

OF **6** SHEETS



**VOLTAGE LINE LOSS CALCULATION**

VOLTAGE LINE LOSS CALCULATIONS

JOB: JEFFERSON MIDDLES SCHOOL - NEW CONSTRUCTION  
DATE: 6-29-05

VOLTAGE LINE LOSS FORMULA:  
(A) x (F) x (C) / (D) / (E) = % LINE LOSS

(A) AMPS	OTHER DATA					
EXTERIOR HORN (AH-24WP-R)	0.062	(B) WIRE GAUGE	12			
15cd HORN/STROBE (AS-24MCW-FR)	0.080	(C) WIRE RESISTANCE	21.6			
75cd HORN/STROBE (AS-24MCC-FR)	0.165	(D) CIRCULAR MILLS	6530			
15cd STROBE (RSS-24MCW-FR)	0.041	(E) VOLTS (DC)	20.4			
110cd STROBE (RSS-24MCW-FR)	0.140	(F) LINE WIRE FOOTAGE (PER CIRCUIT)				
BELL (MB-06-24-R)	0.030					

	EXT. HORN	15cd HORN/STROBE	75cd HORN/STROBE	15cd STROBE	110cd STROBE	BELL	TOTAL AMPS	LINE WIRE FOOTAGE	VOLTAGE LOSS	% LINE LOSS
FIRE ALARM CONTROL PANEL (BLDG)										
CIRCUIT 1 - (SPARE)	0	0	0	0	0	0	0.000	0	0.00	0.00%
CIRCUIT 2 - (SPARE)	0	0	0	0	0	0	0.000	0	0.00	0.00%
TOTAL	0	0	0	0	0	0	0.000			
SNAC-9 PANEL #1 (BLDG L)										
CIRCUIT 3 - HORNS & STROBES (FL1-SOUTH)	2	1	4	5	0	0	1.069	450	1.65	8.10%
CIRCUIT 4 - HORNS & STROBES (FL1-NORTH)	1	0	4	1	0	0	0.763	500	1.26	6.19%
CIRCUIT 5 - HORNS & STROBES (FL2-SOUTH)	1	1	4	2	0	0	0.884	315	0.92	4.52%
CIRCUIT 6 - HORNS & STROBES (FL2-NORTH)	1	1	4	2	0	0	0.884	500	1.46	7.17%
TOTAL	5	3	16	10	0	0	3.6			
SNAC-9 PANEL #2 (BLDG N)										
CIRCUIT 7 - HORNS & STROBES GIRLS/WOMEN	2	2	0	3	1	0	0.547	275	0.50	2.44%
CIRCUIT 8 - HORNS & STROBES BOYS/MEN	2	2	0	3	1	0	0.547	250	0.45	2.22%
CIRCUIT 9 - BELLS	0	0	0	0	0	1	0.030	100	0.01	0.05%
CIRCUIT 10 - BELLS	0	0	0	0	0	1	0.030	100	0.01	0.05%
TOTAL	0	4	0	6	2	2	1.154			

**BATTERY CAPACITY CALCULATION - FACP**

BATTERY CAPACITY CALCULATION SHEET  
FIRE ALARM CONTROL PANEL - 7200A BSU/

JOB: JEFFERSON MIDDLE SCHOOL - NEW CONSTRUCTION  
DATE: SEPTEMBER 1, 2006

QTY	MODEL #	DESCRIPTION	STANDBY UNIT CURRENT (AMPS)	STANDBY TOTAL CURRENT (AMPS)	ALARM UNIT CURRENT (AMPS)	ALARM TOTAL CURRENT (AMPS)
1	7200A BSU/C	FIRE ALARM CONTROL PANEL (EXISTING) WHICH INCLUDES: PSU, ACU, SMFR, SCL, KDU	0.122	0.122	0.337	0.337
1	ALU	ANALOG LOOP UNIT (EXISTING)	0.020	0.020	0.032	0.032
1	KDU	REMOTE KEYBOARD DISPLAY UNIT (EXISTING)	0.080	0.080	0.085	0.085
4	ASD-P	PHOTOELECTRIC SMOKE DETECTOR (EXISTING)	0.00033	0.0013	0.007	0.028
32	AMM-2	ADDRESSABLE MONITOR MODULES (EXISTING)	0.0004	0.013	0.007	0.224
2	AGM-2	ADDRESSABLE OUTPUT MODULES (EXISTING)	0.0004	0.001	0.007	0.014
4	NH-12/24-R	EXTERIOR HORN (EXISTING)	0	0	0.027	0.108
6	NS4-24MCW-FR	30cd HORN/STROBE (HORN PORTION) (EXISTING)	0	0	0.027	0.162
1	NS4-24MCW-FR	75cd HORN/STROBE (HORN PORTION) (EXISTING)	0	0	0.027	0.027
9	MS-7A	ADDRESSABLE MANUAL PULL STATION (EXISTING)	0.0003	0.0027	0.000	0.000
2	ASD-PL	PHOTOELECTRIC SMOKE DETECTOR (EXISTING)	0.00033	0.0007	0.007	0.014
1	AGM-2S	SNAC PANEL VISUAL TRIP W/ AGM-2S (EXISTING)	0.0003	0.000	0.000	0.000
1	SNAC-9	SNAC PANEL AUDIBLE TRIP (EXISTING)	0	0	0.015	0.015
46	ASD-PL2	PHOTOELECTRIC SMOKE DETECTOR	0.0003	0.0138	0.0085	0.299
53	ATD-L2	HEAT DETECTOR	0.0003	0.0159	0.0085	0.345
10	MS-7A	ADDRESSABLE MANUAL PULL STATION (EXISTING PORTABLES)	0.0003	0.0030	0.000	0.000
1	AMM-2	FLOW SWITCH W/ AMM-2	0.0004	0.0004	0.0008	0.001
4	AMM-2	TAMPER SWITCH W/ AMM-2	0.0004	0.0016	0.0008	0.002
4	AGM-2S	SNAC PANEL TRIP W/ AGM-2S	0.0003	0.0012	0.0003	0.001
		TOTAL		0.256		1.674

BATTERY CALCULATIONS

ASSUMPTIONS:

A) REQ'D BATTERY BACKUP - STANDBY 24 HRS

B) REQ'D BATTERY BACKUP - ALARM 5 MIN ( 0.083333333 HOURS)

C) ALLOWABLE ERROR 25%

D) TOTAL STANDBY BACKUP (AMP/HOURS) 6.16

E) TOTAL ALARM BACKUP 0.14

F) ALLOWABLE ERROR (C X (D+E)) 1.57

TOTAL AMP/HR REQ'D (D+E+F) 7.87 AMP/HRS

BATTERIES SUBMITTED: (2) ES7-12 AMP HOUR: 17 AMP/HOURS

**BATTERY CAPACITY CALCULATION - SNAC-9 #1**

BATTERY CAPACITY CALCULATION SHEET  
SUPPLEMENTARY NOTIFICATION APPLIANCE CIRCUIT - SNAC-9 - L

JOB: JEFFERSON MIDDLE SCHOOL - NEW CONSTRUCTION  
DATE: SEPTEMBER 1, 2006

QTY	MODEL #	DESCRIPTION	STANDBY UNIT CURRENT (AMPS)	STANDBY TOTAL CURRENT (AMPS)	ALARM UNIT CURRENT (AMPS)	ALARM TOTAL CURRENT (AMPS)
1	SNAC-9	SUPPLEMENTARY NOTIFICATION APPLIANCE CIRCUIT	0.075	0.075	0.175	0.175
1	ADM-2S	SNAC PANEL VISUAL TRIP W/ ADM-2S	0.0003	0.000	0.0003	0.000
5	AH-24WP-R	EXTERIOR HORN	0.000	0.000	0.062	0.310
3	AS-24MCC-FR	15cd HORN/STROBE	0.000	0.000	0.080	0.240
16	AS-24MCC-FR	75cd HORN/STROBE	0.000	0.000	0.165	2.640
11	RSS-24MCW-FR	15cd STROBE	0.000	0.000	0.041	0.451
		TOTAL		0.075		3.816

BATTERY CALCULATIONS

ASSUMPTIONS:

A) REQ'D BATTERY BACKUP - STANDBY 24 HRS

B) REQ'D BATTERY BACKUP - ALARM 5 MIN ( 0.08 HOURS)

C) ALLOWABLE ERROR 25%

D) TOTAL STANDBY BACKUP (AMP/HOURS) 1.81

E) TOTAL ALARM BACKUP 0.32

F) ALLOWABLE ERROR (C X (D+E)) 0.53

TOTAL AMP/HR REQ'D (D+E+F) 2.66 AMP/HRS

BATTERIES SUBMITTED: (2) ES7-12 AMP HOUR: 7 AMP/HOURS

**BATTERY CAPACITY CALCULATION - SNAC-9 #2**

BATTERY CAPACITY CALCULATION SHEET  
SUPPLEMENTARY NOTIFICATION APPLIANCE CIRCUIT - SNAC-9 - N

JOB: JEFFERSON MIDDLE SCHOOL - NEW CONSTRUCTION  
DATE: SEPTEMBER 1, 2006

QTY	MODEL #	DESCRIPTION	STANDBY UNIT CURRENT (AMPS)	STANDBY TOTAL CURRENT (AMPS)	ALARM UNIT CURRENT (AMPS)	ALARM TOTAL CURRENT (AMPS)
1	SNAC-9	SUPPLEMENTARY NOTIFICATION APPLIANCE CIRCUIT	0.075	0.075	0.175	0.175
2	ADM-2S	SNAC PANEL VISUAL TRIP W/ ADM-2S	0.0003	0.001	0.0003	0.001
4	AH-24WP-R	EXTERIOR HORN	0.000	0.000	0.062	0.248
4	AS-24MCC-FR	15cd HORN/STROBE	0.000	0.000	0.080	0.320
6	RSS-24MCW-FR	15cd STROBE	0.000	0.000	0.041	0.246
2	RSS-24MCW-FR	110cd STROBE	0.000	0.000	0.140	0.280
2	MB-06-24-R	BELL	0.000	0.000	0.030	0.060
		TOTAL		0.076		1.155

BATTERY CALCULATIONS

ASSUMPTIONS:

A) REQ'D BATTERY BACKUP - STANDBY 24 HRS

B) REQ'D BATTERY BACKUP - ALARM 5 MIN ( 0.08 HOURS)

C) ALLOWABLE ERROR 25%

D) TOTAL STANDBY BACKUP (AMP/HOURS) 1.81

E) TOTAL ALARM BACKUP 0.10

F) ALLOWABLE ERROR (C X (D+E)) 0.48

TOTAL AMP/HR REQ'D (D+E+F) 2.39 AMP/HRS

BATTERIES SUBMITTED: (2) ES7-12 AMP HOUR: 7 AMP/HOURS

**BATTERY CAPACITY CALCULATION - SNAC-9 (EXISTING)**

BATTERY CAPACITY CALCULATION SHEET  
EXISTING SUPPLEMENTARY NOTIFICATION APPLIANCE CIRCUIT - SNAC-9 - P

JOB: JEFFERSON MIDDLE SCHOOL - NEW CONSTRUCTION  
DATE: SEPTEMBER 1, 2006

QTY	MODEL #	DESCRIPTION	STANDBY UNIT CURRENT (AMPS)	STANDBY TOTAL CURRENT (AMPS)	ALARM UNIT CURRENT (AMPS)	ALARM TOTAL CURRENT (AMPS)
1	SNAC-9	SUPPLEMENTARY NOTIFICATION APPLIANCE CIRCUIT (EXISTING)	0.075	0.075	0.175	0.175
1	ADM-2S	SNAC PANEL VISUAL TRIP W/ ADM-2S (EXISTING)	0.0003	0.000	0.0003	0.000
2	AH-24WP-R	EXTERIOR HORN (EXISTING)	0	0	0.041	0.082
2	RSS-24MCW-FR	15cd STROBE (EXISTING)	0	0	0.045	0.090
1	AS-24MCC-FR	85cd HORN/STROBE (EXISTING)	0	0	0.202	0.202
1	RSS-24MCW-FR	15cd STROBE	0.000	0.000	0.041	0.041
		TOTAL		0.075		0.590

BATTERY CALCULATIONS

ASSUMPTIONS:

A) REQ'D BATTERY BACKUP - STANDBY 24 HRS

B) REQ'D BATTERY BACKUP - ALARM 5 MIN ( 0.08 HOURS)

C) ALLOWABLE ERROR 25%

D) TOTAL STANDBY BACKUP (AMP/HOURS) 1.81

E) TOTAL ALARM BACKUP 0.05

F) ALLOWABLE ERROR (C X (D+E)) 0.46

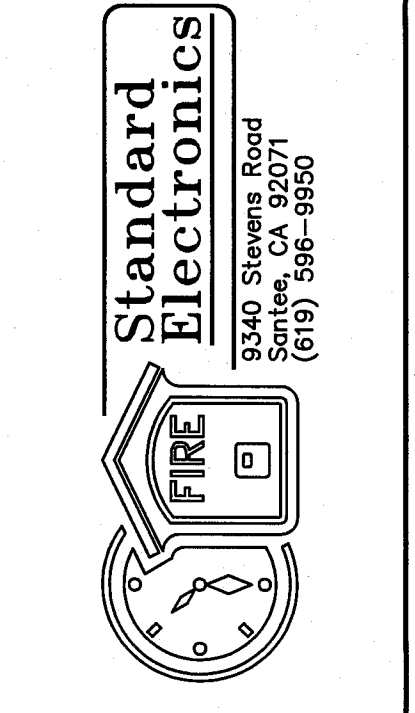
TOTAL AMP/HR REQ'D (D+E+F) 2.32 AMP/HRS

BATTERIES SUBMITTED: (2) ES7-12 AMP HOUR: 7 AMP/HOURS

JEFFERSON M.S.

REVISIONS	BY
09-19-05 IN-HOUSE	EM

**JEFFERSON MIDDLE SCHOOL**  
**NEW CONSTRUCTION**  
**823 ACAIA STREET**  
**OCEANSIDE, CA 92054**



**CALS + RISER DIAGRAMS - FIRE ALARM SYSTEM**

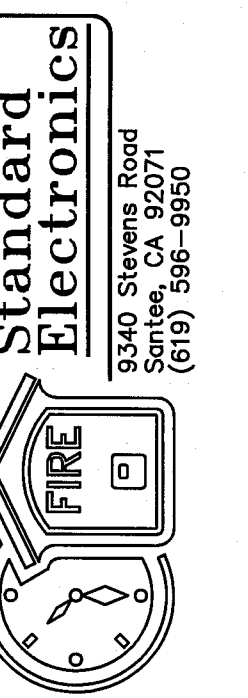
DATE:	6-29-05
SCALE:	NONE
DRAWN:	D. CASTELLANOS
CHECKED:	
DWG NO.	SE05-0617
JOB ID:	704

SHEET NO. **4**  
OF **6** SHEETS

**AS-BUILT**  
11-28-06 DC

REVISIONS	BY
09-19-05 IN-HOUSE	EM

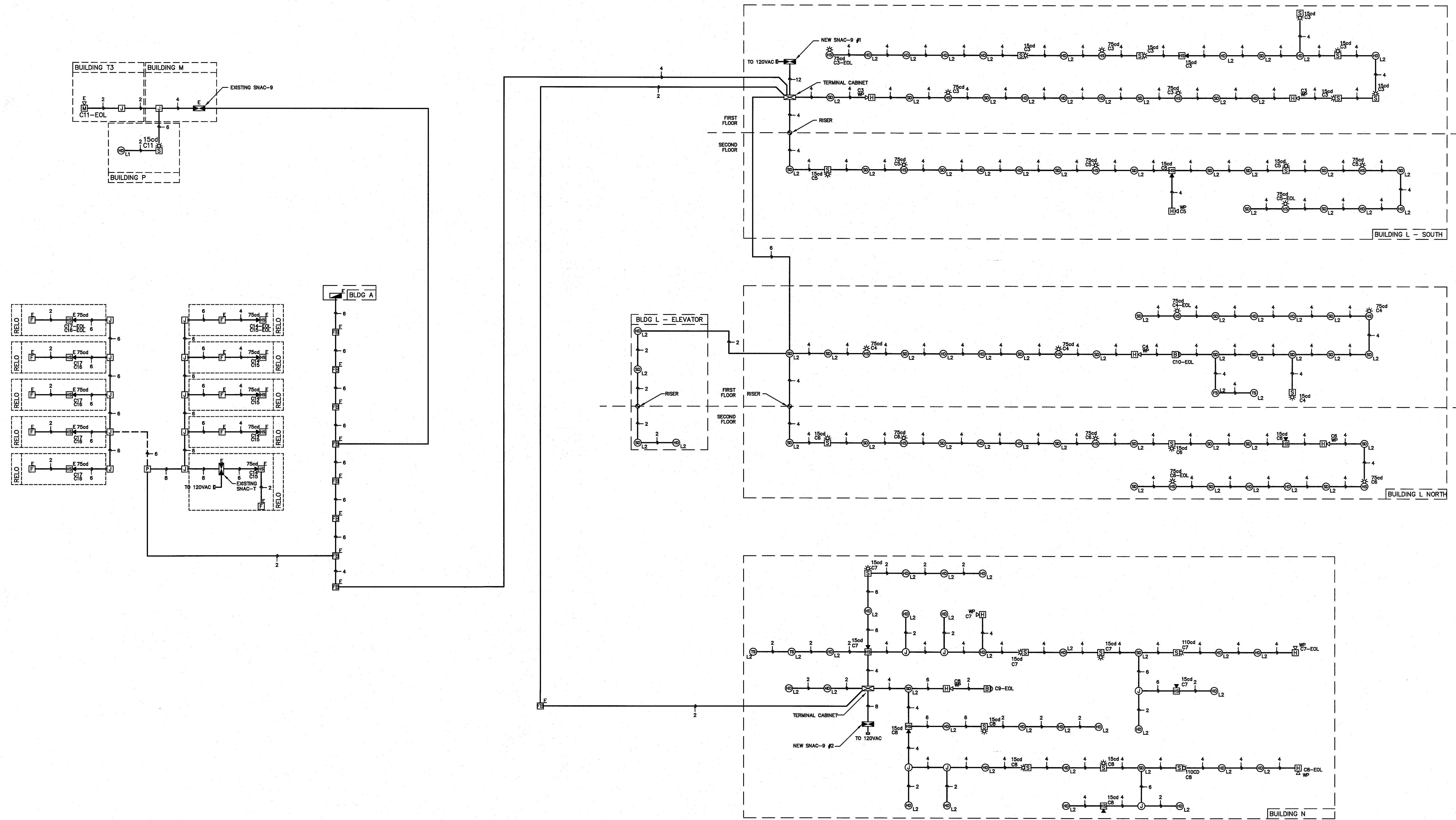
**JEFFERSON MIDDLE SCHOOL**  
 NEW CONSTRUCTION  
 823 ACAIA STREET  
 OCEANSIDE, CA 92054



**CALS + RISER DIAGRAMS FIRE ALARM SYSTEM**

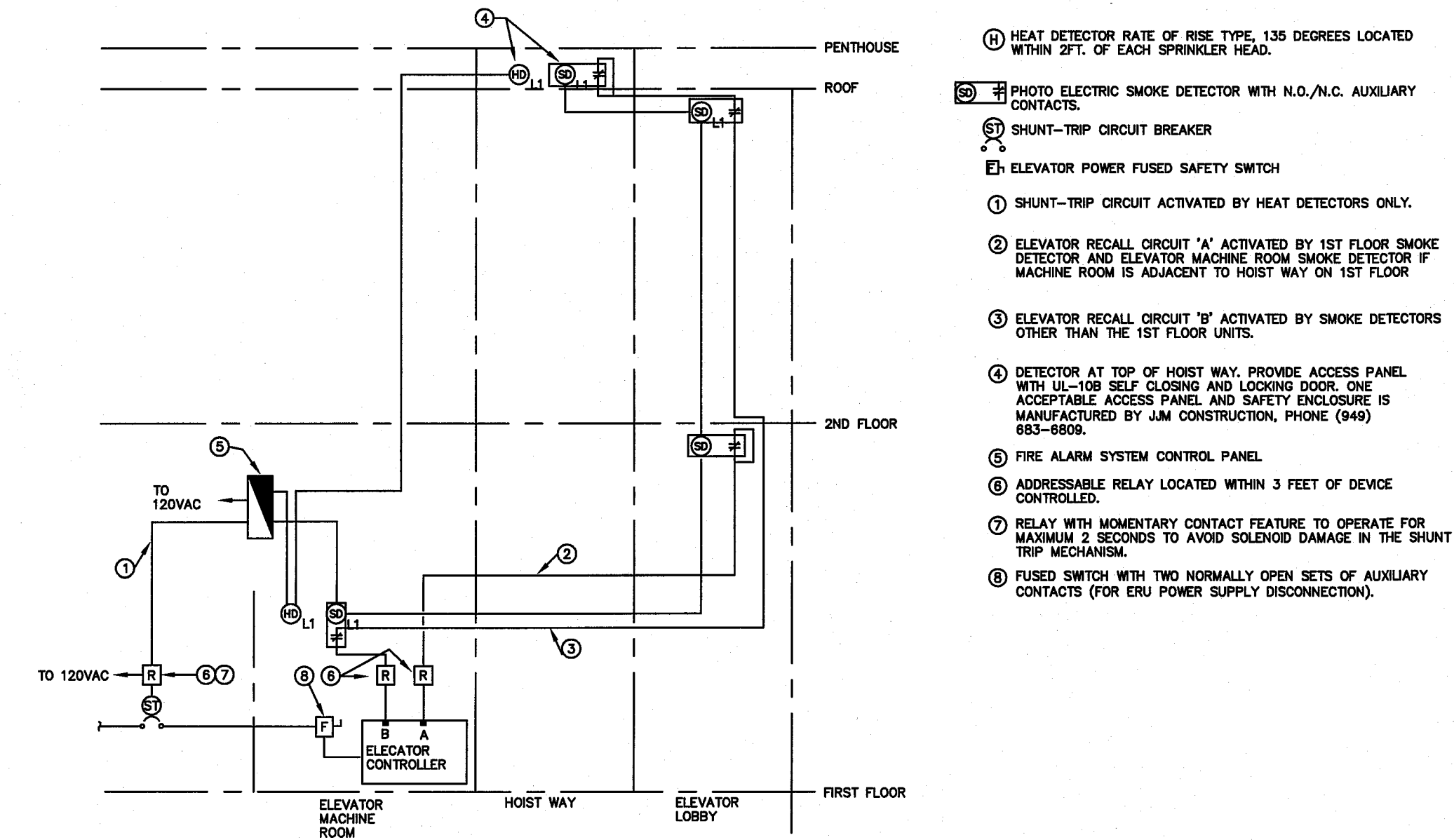
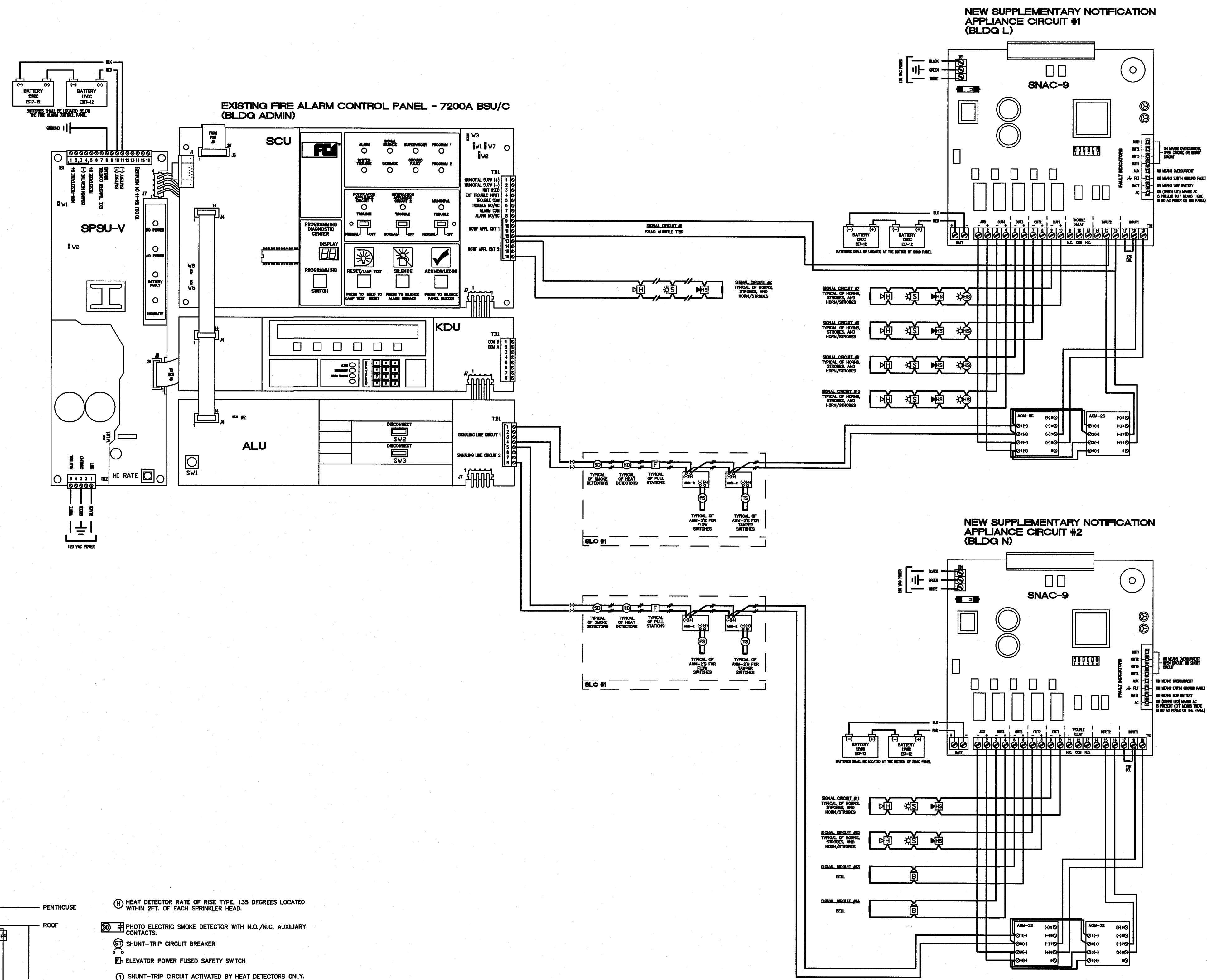
DATE:	6-29-05
SCALE:	NONE
DRAWN:	D. CASTELLANOS
CHECKED:	
DWG NO.	SE05-0617
JOB ID:	704

SHEET NO.	<b>5</b>
OF	<b>6</b> SHEETS

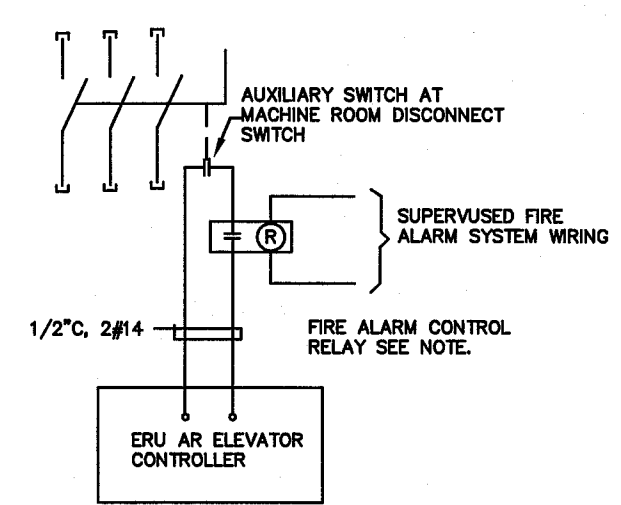


**AS-BUILT**  
 11-28-06 DC

REVISIONS	BY
09-19-05(N-HOUSE)	EM



**TYPICAL ELEVATOR CONTROL SCHEMATIC DIAGRAM**  
SCALE: NONE

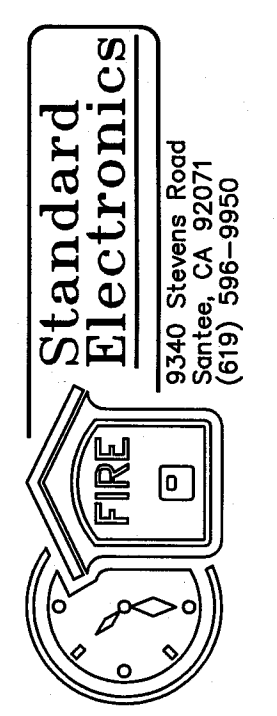


NOTE: RELAY SHALL OPERATE TO OPEN CONTACT WHEN FIRE ALARM PANEL SIGNALS SHUNT TRIP OPERATION

**ELEVATOR ERU CONTROL DIAGRAM**  
SCALE: NONE

**AS-BUILT**  
11-28-06 DC

**JEFFERSON MIDDLE SCHOOL**  
NEW CONSTRUCTION  
823 ACAIA STREET  
OCEANSIDE, CA 92054



**POINT TO POINT FIRE ALARM SYSTEM**

DATE:	6-29-05
SCALE:	NONE
DRAWN:	D. CASTELLANOS
CHECKED:	
DWG NO.:	SE05-0617
JOB ID:	704

SHEET NO. **6**  
OF **6** SHEETS