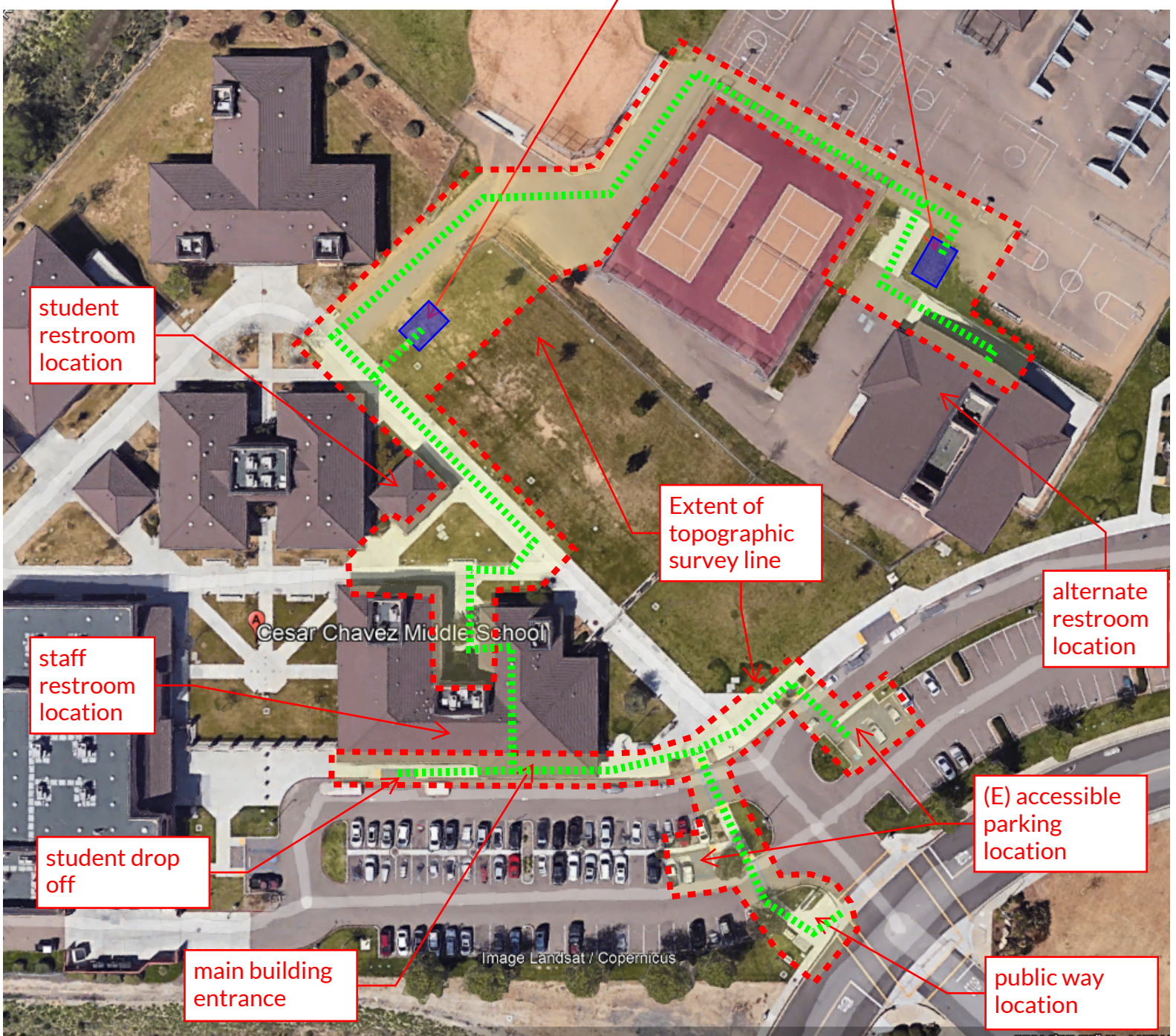


Cesar Chavez Middle School  
Oceanside Unified School District  
202 Oleander Dr, Oceanside, CA  
RCA Proj. #1-60-08  
New Shade Structures  
December 12, 2022

Proposed path of travel  
Limit of Topo Survey Request

Proposed (2) 20' x 15' fabric shade structure locations at lower lunch seating area.



student restroom location

staff restroom location

student drop off

main building entrance

Extent of topographic survey line

alternate restroom location

(E) accessible parking location

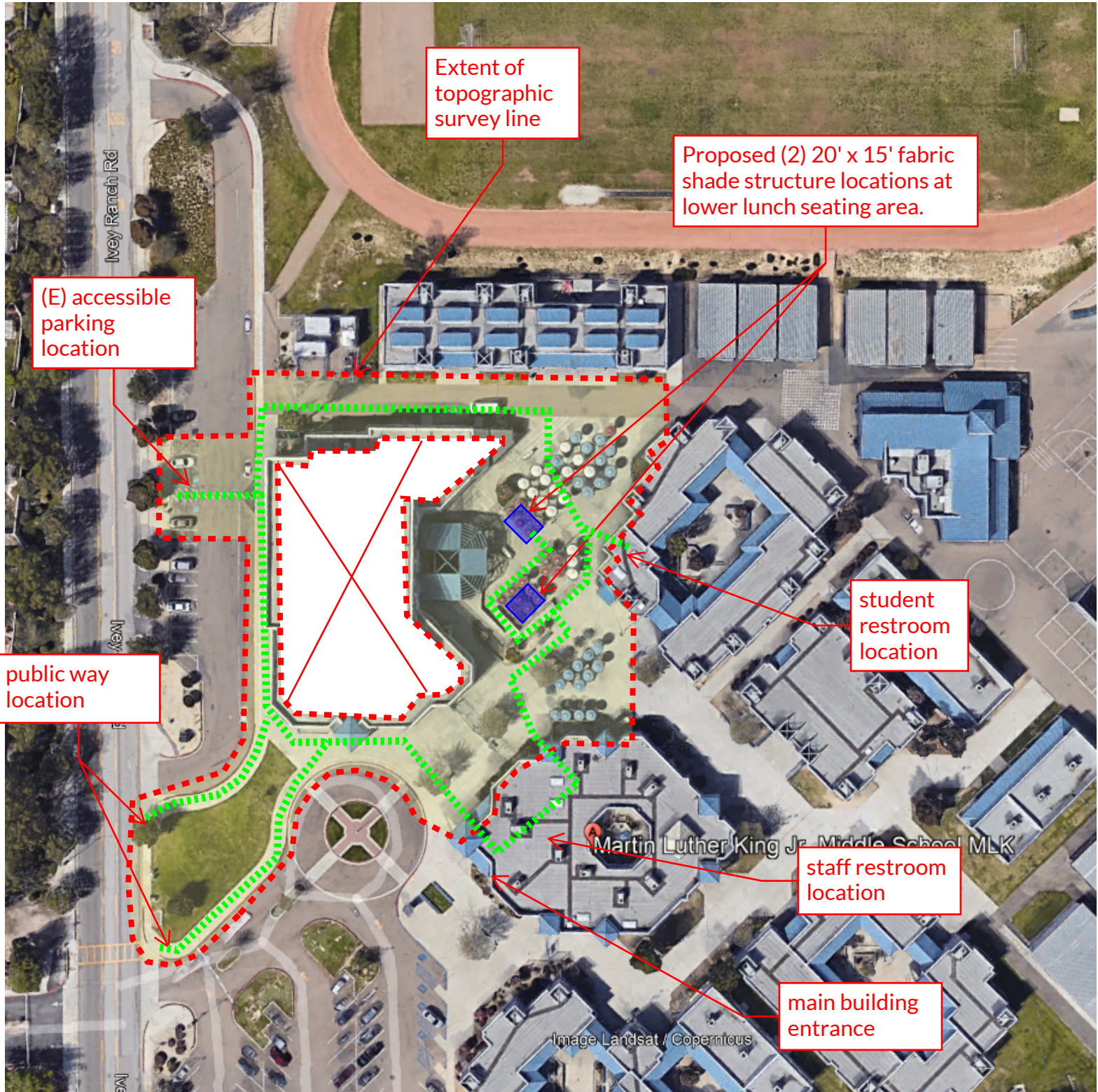
public way location



Martin Luther King Jr. Middle School  
Oceanside Unified School District  
1290 Ivey Ranch Rd, Oceanside, CA 92057  
RCA Proj. #1-60-08  
New Shade Structures  
December 12, 2022

Proposed path of travel

Limit of Topo Survey Request





Lincoln Middle School  
Oceanside Unified School District  
2000 California St, Oceanside, CA 92054  
RCA Proj. #1-60-08  
New Shade Structures  
December 12, 2022

Proposed path of travel  
Limit of Topo Survey Request



Proposed 40' x 30' fabric shade structure location near (E) shade structures.

student restroom location

capture this (e) catch basin

public way location

Confirm staff restroom location?

(E) accessible parking location