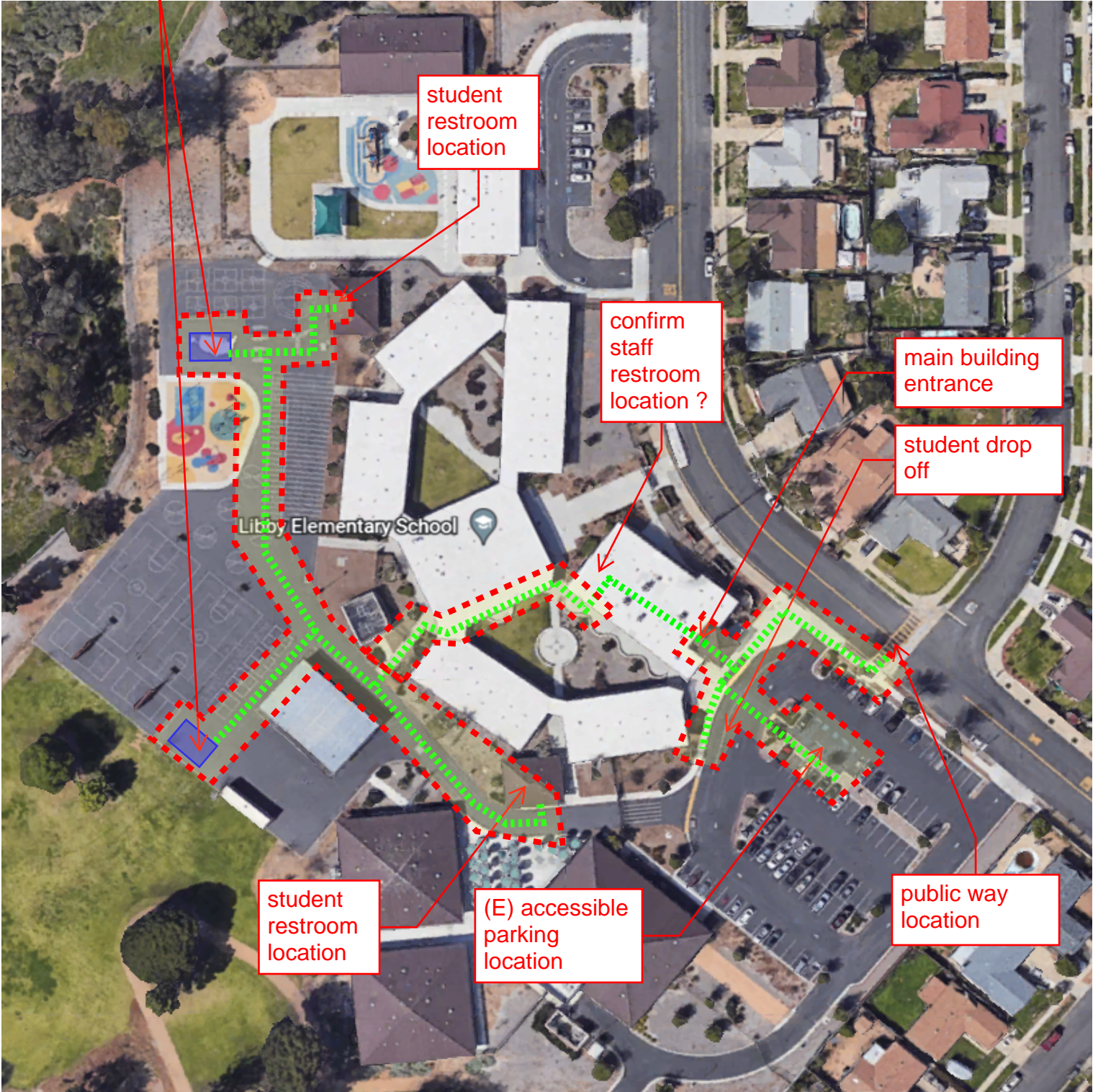


Libby Elementary School
Oceanside Unified School District
423 W. Redondo Dr, Oceanside, CA
RCA Proj. #1-60-08
New Shade Structures
December 15, 2022

Proposed path of travel
Limit of Topo Survey Request

Proposed (2) 20' x 15' fabric shade structures.



Palmquist Elementary School
Oceanside Unified School District
1999 California St, Oceanside, CA 92057
RCA Proj. #1-60-08
New Shade Structures
December 15, 2022

Proposed path of travel

Limit of Topo Survey Request

Proposed 40' x 30' fabric shade structure at existing lunch seating area.

public way location

student drop off

Palmquist Elementary School

(E) accessible parking location

main building entrance

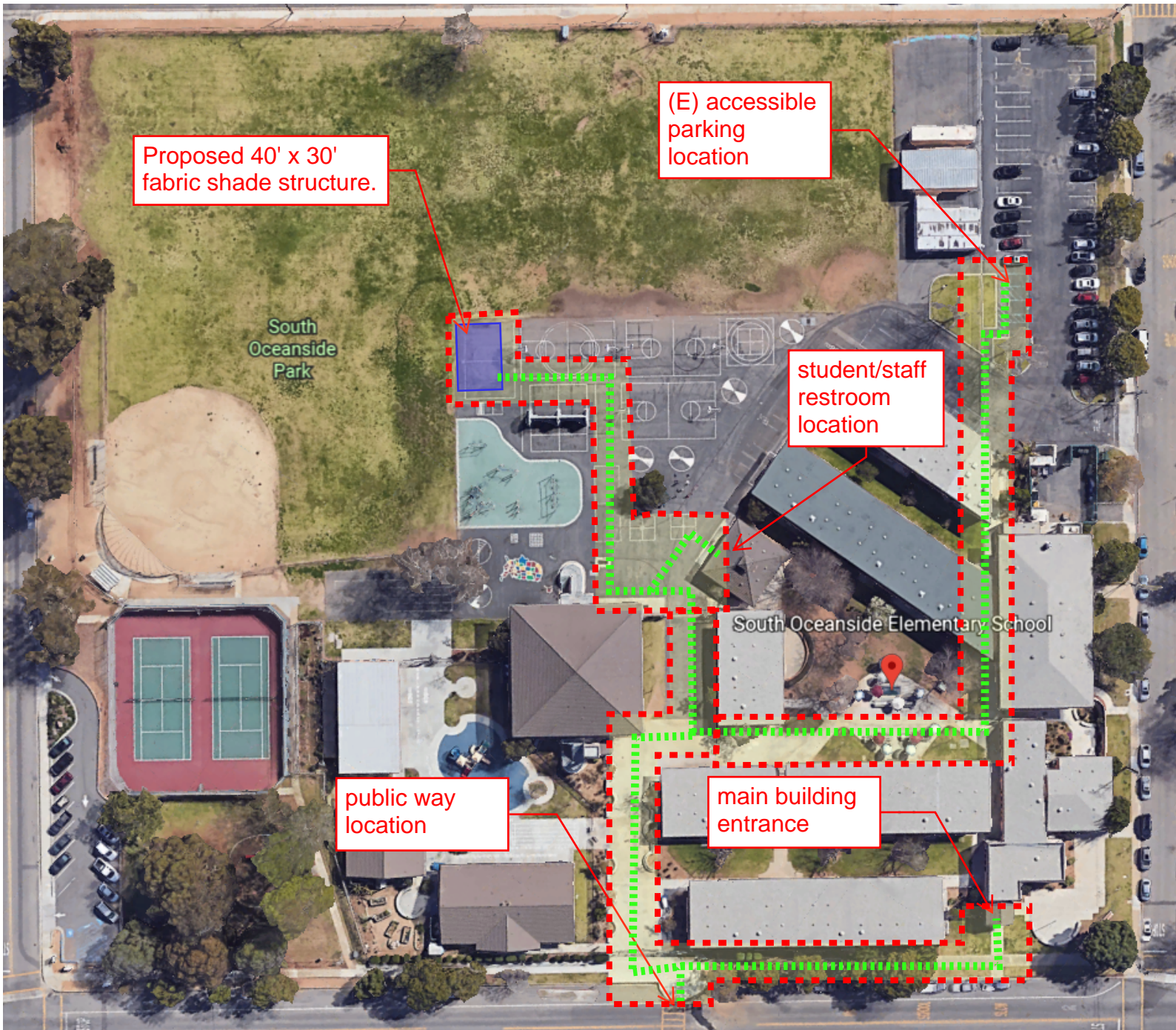
student restroom location

staff restroom location



South Oceanside Elementary School
Oceanside Unified School District
1806 S. Horne St, Oceanside, CA 92057
RCA Proj. #1-60-08
New Shade Structures
December 15, 2022

Proposed path of travel
Limit of Topo Survey Request



Mission Elementary School
Oceanside Unified School District
2100 Mission Ave, Oceanside, CA 92058
RCA Proj. #1-60-08
New Shade Structures
December 15, 2022

Proposed path of travel

Limit of Topo Survey Request



Proposed 40' x 30' fabric shade structure.

main building entrance

student/staff restroom location? Confirm

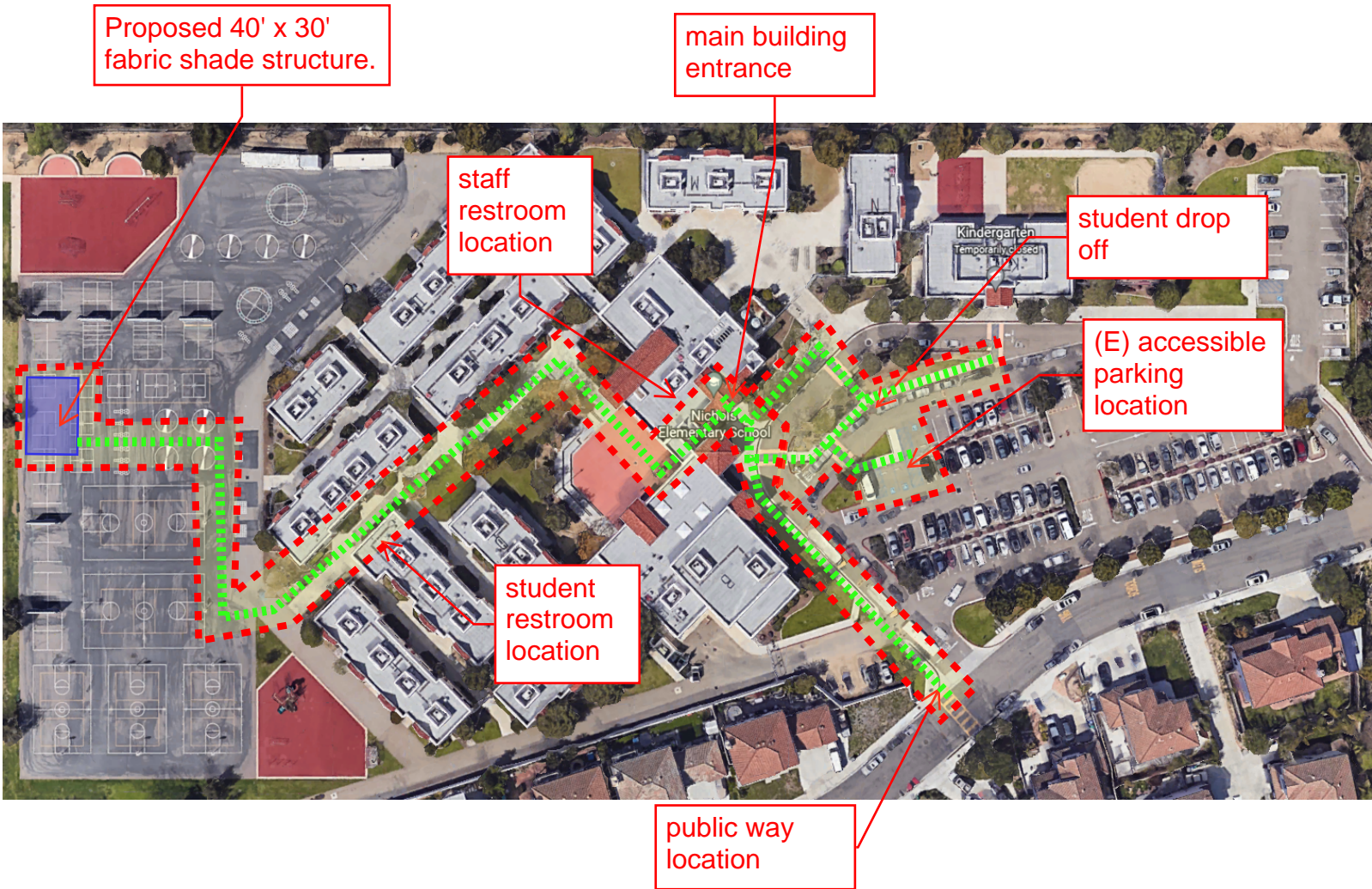
student drop off

(E) accessible parking location

public way location

Nichols Elementary School
Oceanside Unified School District
4250 Old Grove Rd, Oceanside, CA 92057
RCA Proj. #1-60-08
New Shade Structures
December 15, 2022

Proposed path of travel
Limit of Topo Survey Request



Del Rio Elementary School
Oceanside Unified School District
5200 N. River Road, Oceanside, CA 92057
RCA Proj. #1-60-08
New Shade Structures
December 15, 2022

Proposed path of travel
Limit of Topo Survey Request

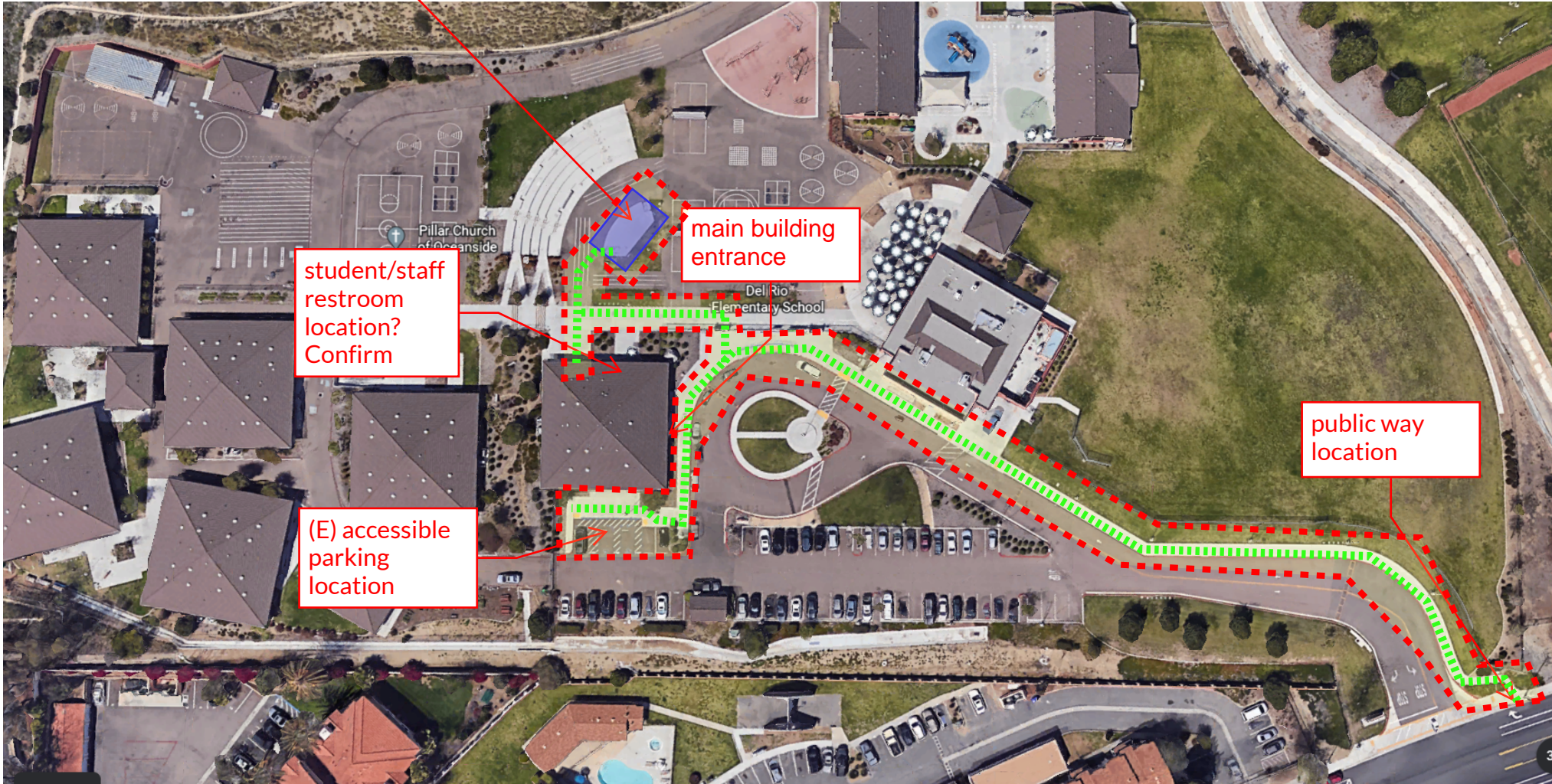
Proposed 40' x 30' fabric shade structure over existing amphitheater stage

student/staff restroom location? Confirm

(E) accessible parking location

main building entrance

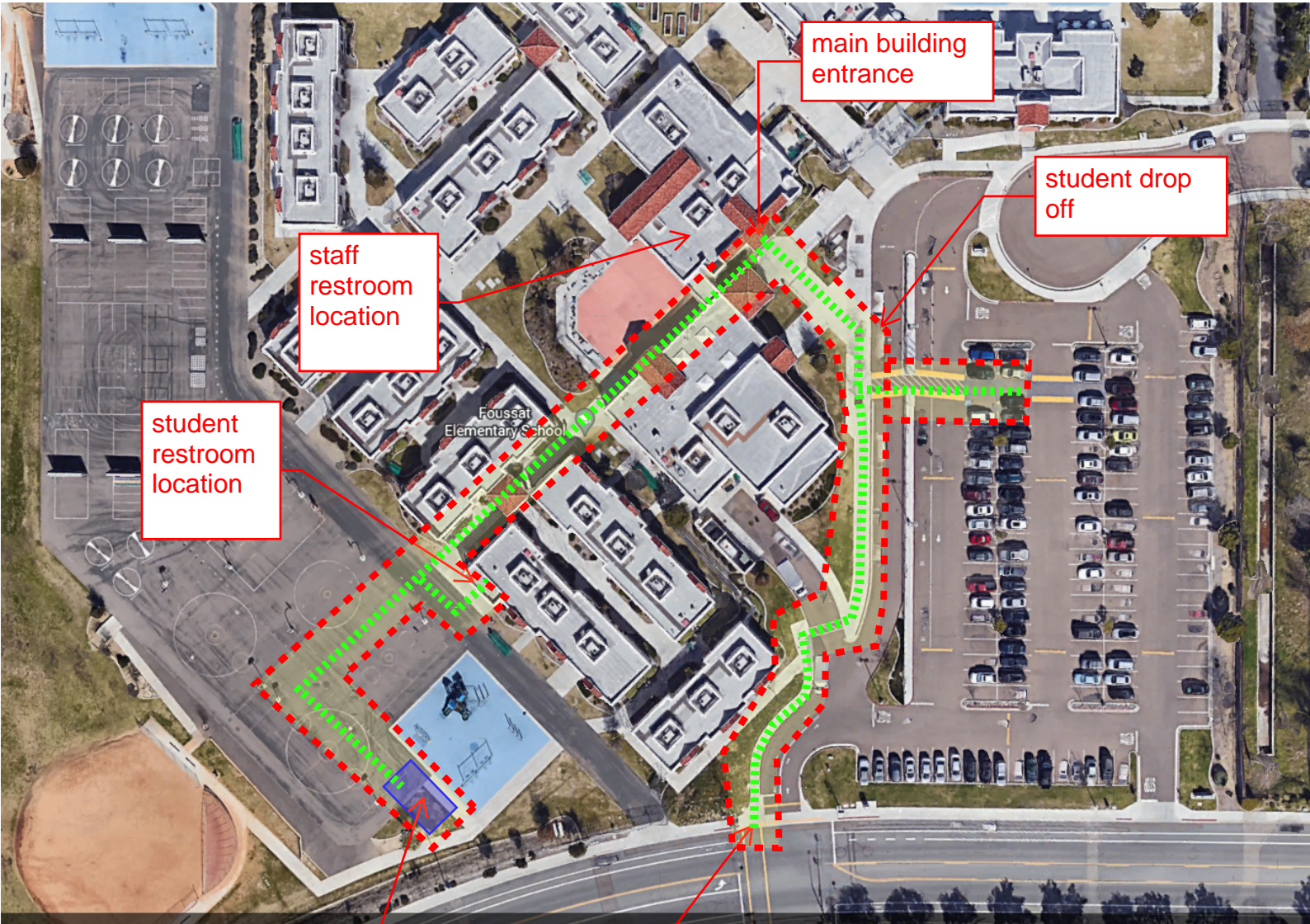
public way location



Foussat Elementary School
Oceanside Unified School District
3800 Pala Rd, Oceanside, CA 92058
RCA Proj. #1-60-08
New Shade Structures
December 15, 2022

Proposed path of travel

Limit of Topo Survey Request



student restroom location

staff restroom location

main building entrance

student drop off

Proposed 40' x 30' fabric shade structure.

public way location